

Ministry of the Attorney General

Ontario's Justice Centre Pilots:

An Innovative Community-Driven Justice Model for the Future

Provincial HSJCC Conference

November 16, 2021

Justice Centres

Ministry of the Attorney General

Ontario 

Presentation Overview

1. Introduction

- What is a Justice Centre?
- Background & Ontario's Approach
- Current Context & Provincial Developments
- JC Pilots Developed By and For Community
 - Toronto Downtown East Justice Centre Pilot (Launched May 2020)
 - London Justice Centre Pilot (Launched September 2020)

2. Toronto Northwest Justice Centre Pilot (Launched May 2021)

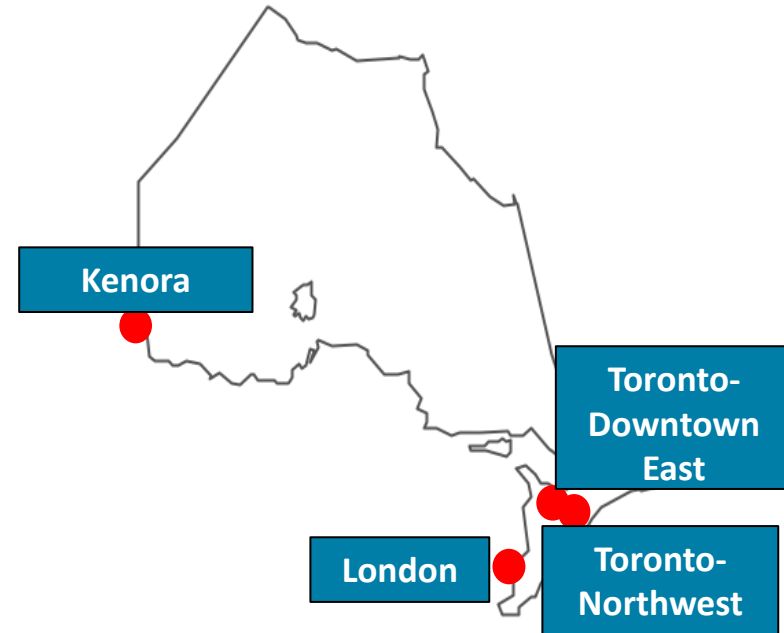
- Context for Action
- Enhanced First Appearance Pilot
- Youth Robbery Court
- Participant Pathways
- Justice for Children and Youth
 - Education Advocate
- Delta Family Resource Centre
 - Mmere Dane Youth Justice Program

3. Kenora Justice Centre Pilot Planning (Launching Winter 2021 TBC)

- Focus on Indigenous Overrepresentation
- Clan-Based Engagement Model
- Daily Miner's Building
- Land Based Healing & Wellness Program
- Grand Council Treaty #3 Kaakewaaseya Justice Services

Background

- Ontario is **innovating how to deliver justice** in our most vulnerable and marginalized communities by introducing the province's first Justice Centres.
- As of September 2020, the province has begun implementing this **new community court model**, which increases access to justice and targets the factors underlying criminal behaviour.
- This initiative is taking place in 4 locations across the province under the **Guns, Gangs, and Violence Reduction Strategy** (Toronto Northwest, Toronto Downtown East, Kenora and London).
- The model draws from **innovative justice practices around the world**, while addressing the unique needs of these distinct communities.

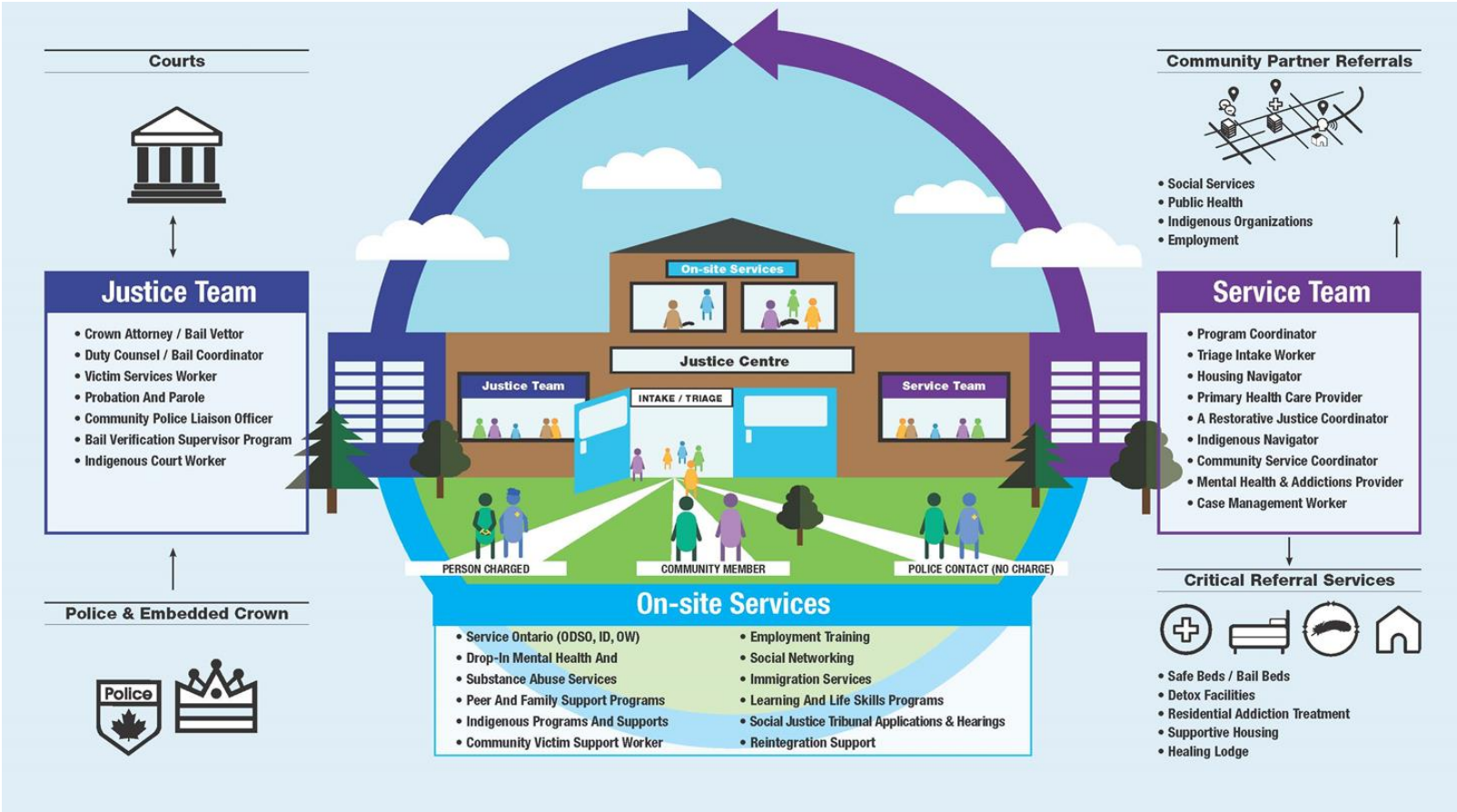


What is a Justice Centre?

- Introduced in over 70 communities around the world, Justice Centres **move justice out of the traditional courtroom and into a community setting**. These centres bring together justice, health, employment, education and social services to address the root causes of crime, break the cycle of offending, and improve public safety and community well-being.
- **Tailored to the unique needs of local communities**, these centres co-locate justice facilities (e.g. courtrooms) with front-end supports (e.g. primary healthcare, mental health supports), prevention services (e.g. employment and skills training) and community re-integration supports (e.g. peer counselling)
- The Justice Centre model **improves outcomes for offenders, victims and communities** by holding individuals accountable for their offences while connecting them to services that reduce the risk of re-offending. Central to the approach is a commitment to better support victims and communities harmed by crime.
- Through Justice Centres a **whole-of-government approach** can promote cross-sector collaboration and multi-agency supports for common clients in order to address the intersecting risk factors that lead to chronic offending, as well as to support improved capacity, coordination and integration with other provincial service systems and sectors, such as health, social services, and housing.

Ontario's Approach

- In order to assess how the model could benefit these four sites, MAG-CLD conducted **Community Needs Assessments**.
- These assessments resulted in a **shared provincial vision** for integrated service delivery as well as four local adaptations.



Current Context

- In collaboration with the **Ontario Court of Justice (OCJ)**, the Ministry is beginning this work with initial **Pilots, which are being evaluated** to assess whether and how the model should be expanded.
- Each Pilot was developed to reflect local circumstances and needs of the community they are meant to serve. Through a **participatory design** process, MAG meets regularly with local experts to discuss emerging priorities, fortify new partnerships, and identify operational needs.
- Following the onset of **COVID-19**, MAG-CLD worked with community and justice participants to identify required pilot adaptations that promote access to justice and address the accumulation of cases in the OCJ to:
 - Include both virtual and remote court proceedings for certain matters;
 - Reduce the number of individuals held on bail and remand (in the appropriate cases) while balancing need to protect public safety;
 - Improve continued access to in-person wrap-around community-based supports, with a focus on connecting people to virtual services; and
 - Ensure access to justice for vulnerable, racialized and self-represented individuals in contact with the justice system (in collaboration with LAO and Defence Bar).

Beginning in September 2020, MAG-CLD **launched its first hybrid Justice Centre pilot in London. Toronto Northwest and Toronto East launched in May 2021.** Kenora is anticipated in Winter 2021 TBC.

Provincial Developments

In addition to local pilot implementation, MAG is working with ministry partners on **cross-site developments** that support **client-centered and effective systems planning** across the criminal justice sector.

Inter-Ministerial Evaluation: Joint-ministry approach for Pilot evaluation to inform scale up and expansion of Justice Centre model. Cross-sector data analysis to understand individual and community impacts.

Indigenous Evaluation: Working with external expert to develop Indigenous evaluation framework for the Kenora Justice Centre Pilot. Participatory and strength-based approach in collaboration with local community.

Client Relations Management Tool: Developing an integrated case management database. One stop shop to support consistent data entry, strong privacy protections and effective evaluation outcomes.

Stage 1 Capital Planning: Exploratory process to identify functional programming for four long-term Justice Centre facilities. Collaborative approach through consultation with local partners in justice, social services, as well as system users.

Inter-Ministerial Program and Policy Development: MAG is working closely with partner ministries to develop, fund and integrate services for Justice Centre clients. Integrated programs developed and funded include MOH mental health and addictions services, educational programs and supports with EDU, enhanced discharge planning with SOLGEN and consultation on supportive housing for justice clients with MMAH.

JC Pilots Developed By and For Community

Working with the **OCJ**, Ontario is innovating how justice services are delivered to vulnerable, marginalized and racialized communities by **launching four Justice Centres pilots** across the province.

Two of these pilots – **Toronto Downtown East and London** – **will be canvassed briefly** and the remainder of the presentation will be dedicated to the work of the Toronto Northwest and Kenora Justice Centre pilots.

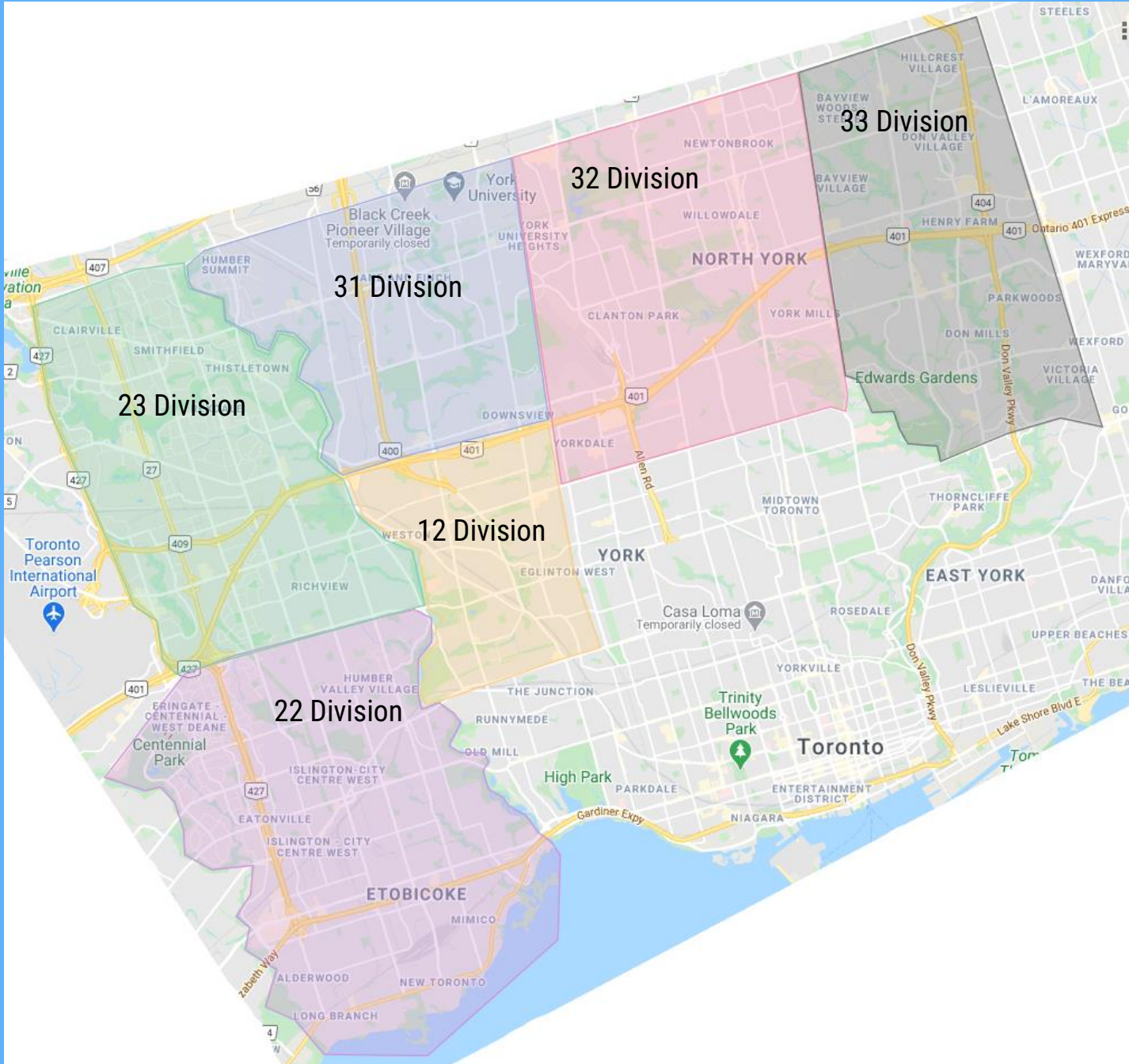
The Toronto Downtown East Justice Centre (launched May 2021) focuses on preventing high-needs individuals at the intersection of poverty, homelessness, isolation, mental health and addictions from cycling through the criminal justice system by addressing criminogenic risk factors with on-site, wrap-around psychiatric, primary care and addictions medicine and development disability supports. The DTE's community partners include

<p>Sound Times: Case management, service navigation, mental health & addictions services operated by people with lived experience and expertise working with hard-to-reach populations.</p>	<p>Inner City Health Associates: Physicians providing transitional primary care, psychiatry and addictions medicine to homeless and underhoused populations in Toronto.</p>	<p>Surrey Place: Case management, service navigation and clinical services and supports for people living with development disabilities, concurrent disorders & ASD.</p>
		

The London Justice Centre (launched September 2020) provides targeted supports for young adults aged 18-24 that responds to the unique needs of emerging adults and prioritizes meaningful connections to skills and job training, education supports, and mental health and addictions services. London's community partners include

<p>St. Leonard's: Case management and systems navigation provided by a trusted community agency which supports children, youth, adults and families.</p>	<p>CMHA: Case management, systems navigation & mental health services provided by a nationwide organization that offers a continuum of community-based mental health supports.</p>	<p>Youth Opportunities Unlimited: Social enterprise training and peer mentorship provided by a community-based organization dedicated to providing shelter, housing and career services for youth and young adults.</p>
		

Toronto Northwest



TNW – Focus on Youth

Community Violence

- Between March 2020 and August 2021, there were 293 shootings and 21 deaths in TNW communities, 19 additional shootings compared to the prior 18 months (*TPS, 2021*).

Reduced Tailored Programming for Racialized Youth

- **67%** of TNW's population identify as a **visible minority** (compared to 51% for the city as a whole); **20%** identify as Black (*TNW Needs Review 2020*).
- Culturally-responsive youth-focused service providers are rarely embedded in criminal justice referral pathways which renders these **services unavailable to many youth**.

Disproportionately High Rates of COVID-19

- TNW has disproportionately high COVID-19 positivity rates with several TNW neighbourhoods **exceeding a positivity rate of 15%** at the height of the pandemic (*Toronto Public Health, 2021*).

Delayed First Appearances

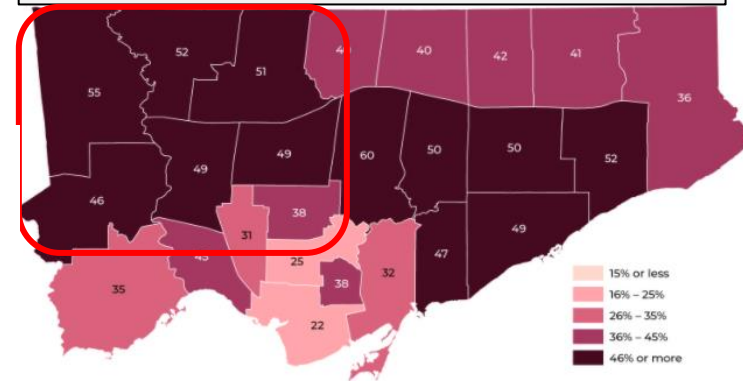
- Youth attending 2201 Finch Courthouse usually receive a First Appearance date approximately **8 to 12 weeks** after arrest.
- This delay can interfere with school, work and family relationships and prolong exposure to key risk factors.

Proliferation of Youth Charged with Robbery

- Youth robbery cases represent the **single most common offence** received by the 2201 Finch Courthouse, comprising approximately **one in every four cases**.

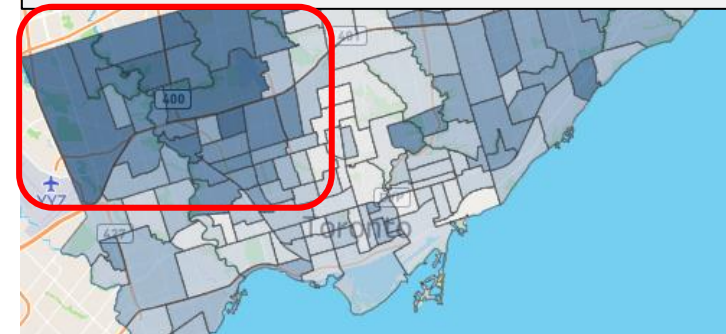
Racialized Population in Toronto by Community

(January – October 2021)



Cumulative COVID-19 Cases in Toronto Neighbourhoods

(January 2021 – October 2021)



TNW: Enhanced First Appearance Pilot

This rapid-response **intervention** receives **all out-of-custody youth cases** from TPS Divisions 12, 22, 23, 31, 32 and 33 and aims to **reduce recidivism** and **save court resources**.

Intervention #1 – Enhanced First Appearance Pilot (21-60 Days)

Fewer Days to Enhanced First Appearance: Police **release** youth to the Justice Centre for an Enhanced First Appearance within **21 days**.

Rapid Resolution: While most cases have 2-4 appearances prior to being traversed to 2201 Finch, some participants choose to remain in the Justice Centre to facilitate timely resolution.

Universal Intake Process & Rapid Referrals: All youth complete an Intake Interview with a **Systems Navigator** to identify needs and inform **rapid referrals** to community programs. In-house services include a Justice Centre Psychologist/Clinical Social Worker, Education Advocate and a Child & Adolescent Psychiatrist who assist with in-depth needs assessments and provide immediate support. Referrals are expedited to address risk factors as participants move to resolve their matter at the 2201 Finch Courthouse.

Improved File Management: Youth often attend their First Appearance **lacking** critical **procedural information** and legal representation. Expedited disclosure combined with an enhanced Intake Process increases the **efficiency** of the court process by facilitating better information for Crown Screening and reduces the need for multiple Crown pre-trials, judicial pre-trials and court appearances.

TNW: Youth Robbery Court & Tailored Programming

The **Youth Robbery Court** receives all out-of-custody youth robbery cases in TPS Divisions 12, 22, 23, 31, 32 and 33.

The Youth Robbery Court **improves outcomes for highest-risk youth** and **reduces the number of cases received by 2201 Finch**, supporting the system-wide COVID-19 backlog recovery effort.

- **In 2021, more than 1 in every 5 cases at 2201 Finch is a youth robbery case**, compared to 1 in every 12 youth cases across Ontario (*O.C.J., 2021*).

Intervention #2 – Youth Robbery Court & Tailored Programming for Highest-Risk Youth (22-200+ Days)

Individualized Plan: Participants work with their Systems Navigator to develop an **Individualized Plan** that includes referrals to social services, opportunities to reconnect with school, family supports, and strength-based programming to improve outcomes across sectors.

Judicial Case Management: All **out-of-custody** youth charged with robbery (including some robberies committed with an imitation firearm) are put on a Judicial Case Management Plan, supported by culturally relevant service providers and a dedicated **Education Advocate** and **Child & Adolescent Forensic Psychiatrist** (accessed with informed consent). This wrap-around approach resolves most youth robbery cases **within 200 days**, minimizing the number of appearances.

Tailored Programming: Participants are referred to **culturally-relevant services and supports** based on need. This includes a purpose-built **program** that embeds elements of the **Rites of Passage Program** to develop a strong and positive racial **identity** while addressing risk factors associated with recidivism and victimization and building protective factors including self-discipline, self-determination and leadership skills.


TNW Justice Centre Participant Pathways

Released by TPS
 (Divisions 12, 22, 23, 31, 32, 33)
Youth Robbery Cases
Youth Robbery Court
Youth Cases
Enhanced First Appearance Pilot

Duty Counsel
 Opportunity for Accused to engage Duty Counsel prior to First Appearance at JC

Intake Interview & Needs Identification

- One-on-one Intake Interview with Community Systems Navigators to;
- Identify highest-risk young adults who would benefit from a further Needs Assessment (e.g. s. 34, cognitive, academic assessment);
- Identify areas of need (e.g. housing, mental health, education, social relationships)




TNW Satellite Justice Centre

Justice Services

- Safe and supported access to technology to attend Virtual JC Court Proceedings in community.
- Judicial Case Management appearances at Judge's discretion up to resolution
- Case Conferences

Systems Navigation Services

- Needs-based referrals to culturally-relevant programming for Racialized and Black youth
- Cognitive/Academic Assessment (as needed)
- s. 34 Reports ordered (as needed)
- Rapid connection to community-based supports to address needs identified during Intake Interview



Wrap-Around Services & Tailored Programming



- ✓ Case Management & Systems Navigation Supports
- ✓ Education Advocacy and reconnection to school
- ✓ Forensic Psychiatric Services
- ✓ EJS programming
- ✓ Employment counselling and resume building
- ✓ Family supports, including crisis management
- ✓ Culturally-relevant mentorship
- ✓ Community-healing circles

Youth Robberies

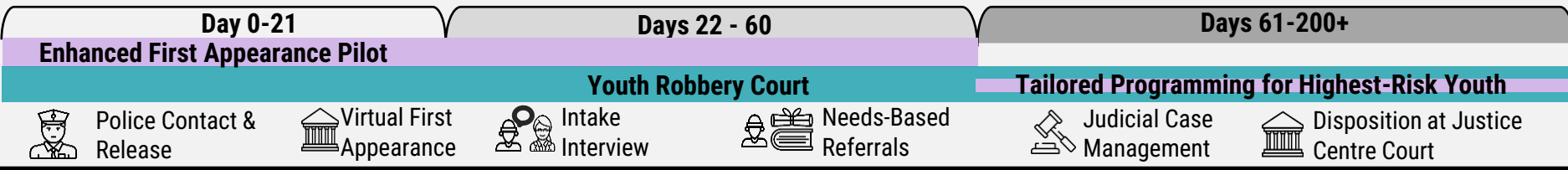
- ✓ Unique programming for highest-risk youth, including youth charged with robbery.

Service Referral Options & Recommendations Sent to Counsel

Crown Pre-Trial

Individual Plan

For Participants with cases remaining in the Justice Centre until resolution, Systems Navigators will work with the Participant, Duty/Defense Counsel and the JC Crown to develop an Individual Plan detailing individualized referrals and programming. Each Individual Plan is reviewed and approved by the Participant, their lawyer and the JC Crown.



TNW: Two Virtual Satellite Courts in Community

TPS Divisions
12, 22 or 23



• TPS charge and release youth directly to Satellite Justice Centre within 21 days, rather than 2201 Finch.
• If released after bail, youth are released to Justice Centre.

TPS Divisions
31, 32 or 33




Satellite #1

Rexdale Community Hub
(Albion Neighbourhood Services)

- Safe and supported access to a Video Suite for Virtual JC Court Proceedings
- Housed at Kipling and Finch in 23 Division
- Co-located with housing services, community legal clinic, newcomer supports, family supports delivered by culturally-relevant social service agencies
- Onsite services during COVID-19



Remote Access to Justice Centre Courtrooms



Defence

Ensuring procedural safeguards



JC Judge



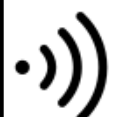
Crown

Dedicated to JC



Court Staff

Clerk & Reporter at 2201 Finch



Satellite #2

Lumenus

- Safe and supported access to a Video Suite for Virtual JC Court Proceedings
- Operated by Lumenus Mental Health, Developmental and Community Services
- Lumenus is delivering the dedicated Justice Centre Systems Navigator.
- Justice Centre Intake Needs Assessments conducted virtually or in-person, onsite
- Onsite mental health and addictions services during COVID-19
- Developmental services



what's up walk in



Justice for Children and Youth (JFCY)

- JFCY is a **non-profit legal aid clinic** that specializes in protecting the rights of children and youth facing conflicts with the legal system, education, social service or mental health systems.
- Provide legal services for **youth under 18** and **young people experiencing housing instability under 25**, in Ontario.
- **Children's rights perspective**, taking into account the opinions, wants, and needs of our clients as they are conveyed to us by them.

Justice Centres

Ministry of the Attorney General



Justice for Children and Youth (JFCY)

We represent young people across a range of legal subjects, including but not limited to:

- ✓ Criminal justice
- ✓ Education law
- ✓ Family and child protection (limited services)
- ✓ Health and mental health
- ✓ Homelessness
- ✓ Immigration
- ✓ Income support
- ✓ Privacy
- ✓ Victimization

JFCY's staff of 12 people (7 lawyers) offer legal services to children, youth and the adults who support them in the following ways:

- ✓ direct representation
- ✓ community development
- ✓ public legal education
- ✓ law reform

Justice Centres

Ministry of the Attorney General



Education Advocate

- In partnership with the **Toronto Northwest Justice Centre**
- Justice Centres seek to bring together justice, health, and social services to address the root causes of crime, break the cycle of offending, and improve community safety
- Justice Centres seek to connect people who are before the court with services to reduce the risk of re-offending. Central to the Justice Centre model is a commitment to better support victims and communities harmed by crime
- In Toronto's Northwest, there is a lack of culturally relevant services and supports for youth in the criminal justice system at highest risk of recidivism as they enter adulthood
- **JFCY's Education Advocate (lawyer) supports students to access education: enrolment, special education supports, discipline, transfers**



Mmere Dane Youth Justice Program



Has provided a variety of wrap-around, culturally appropriate programs and services for Black communities and residents of Northwest Toronto for 40 years.



STRATEGIC PRIORITIES:

- Reducing poverty & community capacity building.
- Enhancing family wellness and mental health
- Prioritizing programs focused on Black communities.
- Enhancing programs for families, youth, and seniors. Enhancing organizational infrastructure & information management.

Mmere Dane YOUTH JUSTICE

Provide culturally appropriate wrap-around services to Black/racialized youth and their families as they navigate the Justice and other systems so that contact with the justice system does not wreck the lives of Black youth and their families

Connects youth and families to internal/external referrals and other community-based services that meet their needs.

Youth Justice Workers

Work directly in (and beyond) the courts with youth and families.

Family Counsellors

Provide safe spaces for critical healing, and other wellness supports.

Mmere Dane: Youth aged 12-17 years old

Mmere Dane: Supporting Black Youth on a Restorative Journey



10	<i>About the Resource and Toolkit</i>
13	<i>Module A: Understanding the Justice System</i> Epa (Handcuffs- Law and Justice)
17	<i>Module B: identity & Self, Nguzo Saba</i> Adinkrahene (Greatness)
22	<i>Module C: Confronting Anti- Black Racism</i> Akoben (Vigilance, Wariness)
41	<i>Module D: Self- Advocacy & System Navigation</i> Nkyinkyim (Initiative, Dynamism & Versatility)
44	<i>Module E: Family Dynamics & Healthy Relationships</i> Abusua Pa (Good Family)
55	<i>Module F: Harm Reduction</i> Bi Nika Bi No (One Shall Fight The Other)
70	<i>Module G: Well-Being & Mental Health</i> Baatan Awaamu (Compassion)
83	<i>Module H: Financial Empowerment</i> Nserewa (Wealth, Abundance, Affluence)
97	<i>Module I: Art Expression</i> Owia A Repue (Progress, Renewal, Vitality)
100	<i>Module J: Nature- Based Learning</i> Adwo (Peace, Serenity)
105	<i>Module K: Conflict, Communication and Managing Challenges</i> Nteasee (Cooperation and Understanding)

Justice Centres

Ministry of the Attorney General

Our Services include...

- Tailored, culturally relevant, customized approach to supporting Black and racialized youth and their families
- Justice Navigation & accessible information on the system
- Program and sessions which enhance Identity and Self, introduce Rites of Passage processes
- **FREE** Individual and Family Counselling
- Non Traditional and Critical Forms of Healing
- One-On-One Workshops
 - Family Dynamics/Healthy Relationships
 - Anger and Aggression
 - Self Advocacy
 - Healing through the Arts
- Connection to other community supports and resources

Kenora



Kenora Justice Centre: Context for Action

What We Learned From the Needs Assessment

Overrepresentation

- Indigenous people are overrepresented as victims, accused persons and offenders in Kenora, Ontario. Indigenous people involved with the criminal justice system often face challenges rooted in forced relocation, loss of culture, involvement in the child welfare system, systemic discrimination, racism, and sexual abuse.
 - Each of these factors can inform how an Indigenous person may experience the justice system, particularly in the context of the Kenora region.

Displacement

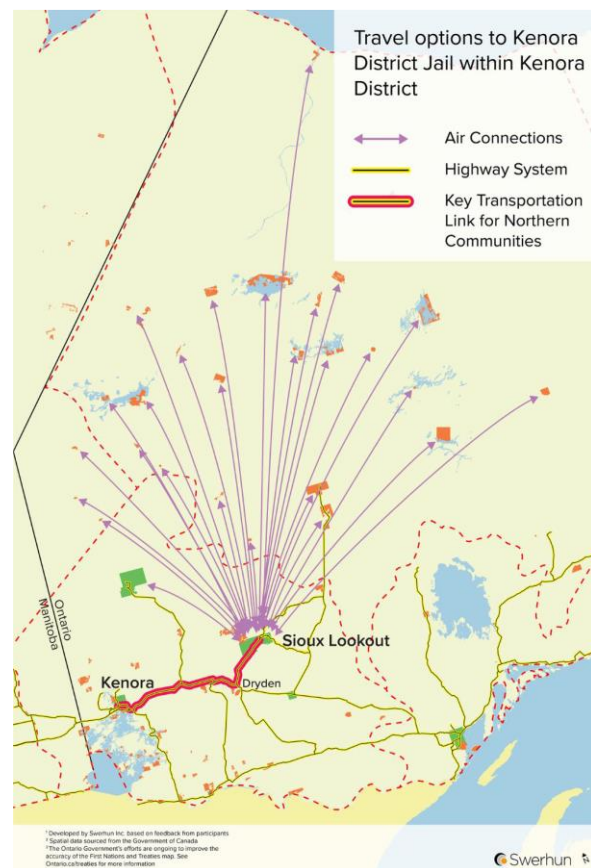
- The criminal justice system displaces a significant number of people from their remote First Nation communities to the city of Kenora.
- This displacement disrupts and harms relationships and connections to family and community contributing to increased financial costs (e.g., \$10,000 for a single flight from a remote First Nation to Kenora) and potential increased involvement in the criminal justice system.

“We can’t arrest our way out of this.”

–Kenora OPP Officer

Kenora Community Justice Centre
Needs Assessment Report
March 2024

Written and compiled for the Ontario Ministry of the Attorney General by
Swerhun Inc.



Kenora Justice Centre: Focus on Indigenous Overrepresentation

The **vision for the Kenora Justice Centre** model will include parallel criminal and Indigenous restorative justice processes with the aim of increasing referrals to existing Indigenous restorative justice programs, reducing bail and remand populations, and providing **multi-sectoral trauma-informed supports** delivered by Indigenous organizations and cross-sector service providers to youth and adults, including **Indigenous women and girls who have experienced or witnessed trauma or violence**.

MAG is exploring a number of pilot opportunities to reduce bail and remand populations in Kenora and to increase the use of diversion to Indigenous Restorative Justice Programs, including:

- Enhancing and encouraging the use of post-charge diversion.
- Implementing a small-scale pilot court outside of the conventional courthouse, co-located with culturally relevant, trauma-informed services that promote healing and wellness.
- Reducing overreliance on short, sharp dispositions, in appropriate cases, in favour of community-based solutions and restorative processes.
- Improving discharge planning and re-integration supports to improve community safety and ensure successful reintegration.
- Expanding opportunities to advocate for transitional housing and supportive housing.
- Partner with local Land-Based Healing & Wellness Program.

Kenora – Broad Engagement

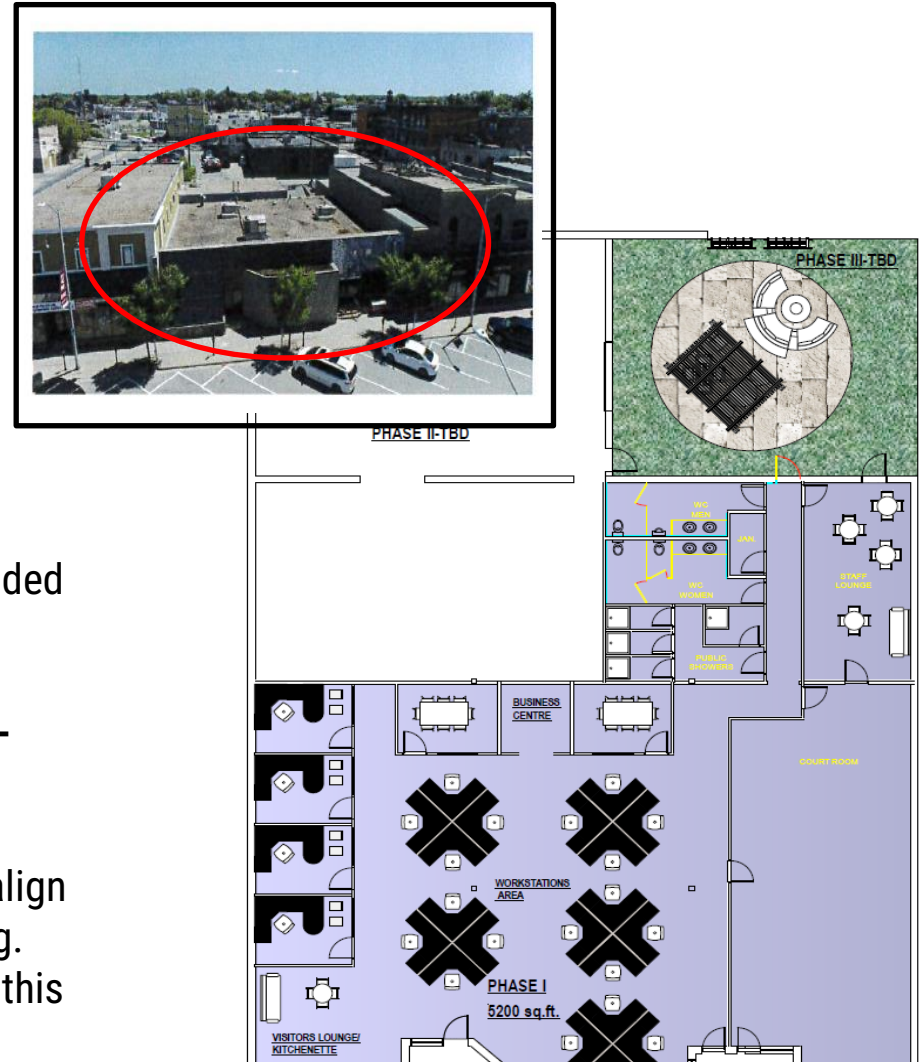
- In collaboration with the **Ontario Court of Justice**, the Ministry's work is guided by a **Kenora JC Advisory Council**, which launched in 2020 and will be supported through a broad engagement structure based on the Anishnaabe clan model that was developed and includes participation by **Indigenous leadership** from **Grand Council Treaty#3** and **Nishnawbe Aski Nation, Elders** as well as cross-sector key community organizations in Kenora.



By partnering with Indigenous leadership, service providers, the judiciary and local representatives working in justice, health, housing and social services, the Kenora Justice Centre will be designed with and for the community it serves with a goal to improving Indigenous people's experiences in the justice system.

Designing the Kenora Justice Centre Pilot Space

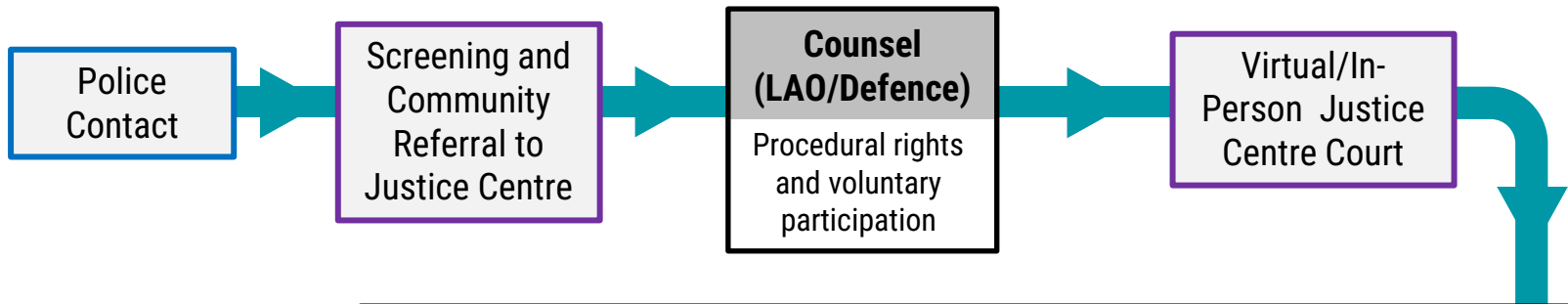
- With support from Grand Council Treaty#3, NAN and the Ontario Court of Justice, the Ministry is working to house the Kenora Justice Centre Pilot in what was previously the **Daily Miner's Building** (recently purchased by Kenora Chief's Advisory).
- The building is located at 33 Main Street South. It consists of one (1) storey over 8100+ square feet. The lot size is 83' x 150', inclusive of 12+ spaces at the rear of building for parking.
- The space and location could permit for an expanded Kenora Justice Centre pilot model which would accommodate a **greater number of community partners and justice participants in a community-setting.**
- The Ministry will also be exploring opportunities align and collaborate with inter-ministerial partners (e.g. SolGen and IA0) on the potential development of this space for joint priorities.



KCA is exploring feasibility of timelines to complete this work in order to launch the First Phase of the Kenora JC Pilot in Winter 2021 (TBD).

Kenora: Participant Pathways

The Kenora Justice Centre Pilot is exploring options that will support **eligible individuals** who are **in contact with the criminal justice system** as well as other **community members experiencing risk factors** associated with offending and victimization. The Pilot model is currently under development and will include a focus on Indigenous healing and wellness solutions and trauma-informed systems supports.

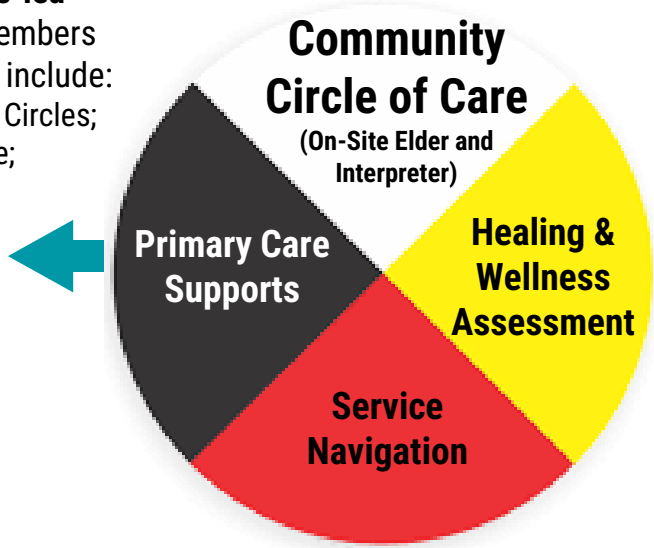


Kenora Justice Centre Pilot *33 Main St.*

Tailored Intake Pathway for non-justice-involved Individuals

Culturally relevant wrap-around services and Indigenous-led community supports for JC clients and/or community members with no justice involvement. Services and referrals could include:

- Restorative Justice Programming/Sentencing and Healing Circles;
- Indigenous-Led Gladue Support Services and Bail Aftercare;
- Housing Navigation;
- Education, Skills-Training;
- Mental Health, Primary Health, Substance Use;
- Peer and Elder Supports;
- Land-Based Healing Programs; and
- Concurrent disorders and developmental disability.



Land Based Healing and Wellness Program

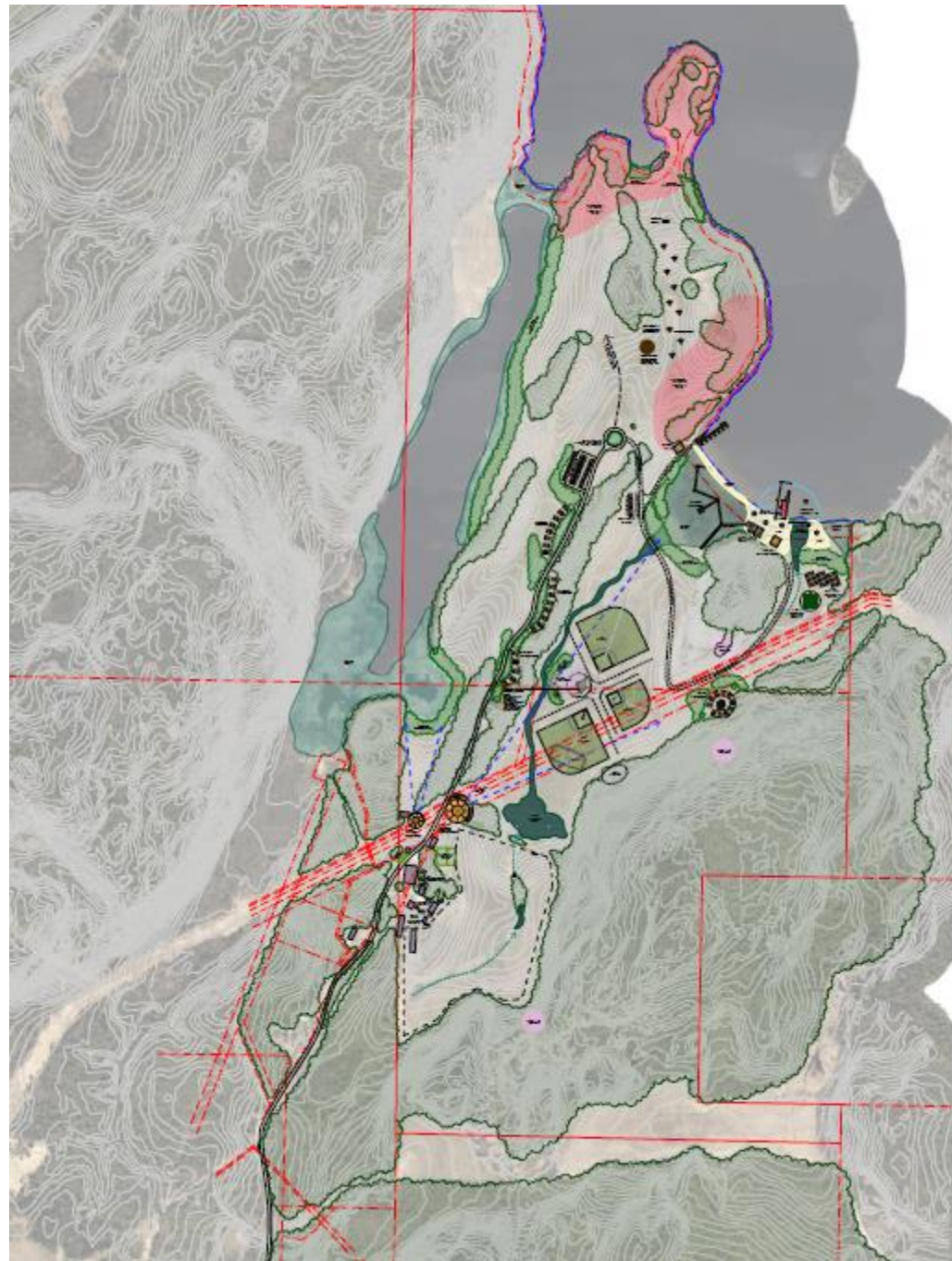
In December 2020, Ontario announced mental health and addictions COVID-19 funding, including two initiatives in Kenora.

A **Land Based Healing and Wellness Program** located at Black Sturgeon Lake to support youth, led by Kenora Chiefs Advisory, focusing on bringing First Nations adults, youth and families together in a physically distanced environment to benefit from programs such as: Peer Helpers, Right to Play, Indigenous Rookie League and Tournaments, Land Based Healing, Healing Circles, Family Well-Being Gatherings, Speaking Our Way, Maawanji'iwe Exchange, and a Family Wellness Camp.

Funding will also support a **Community Circle of Care Coordinator** for the Kenora Justice Centre, which could receive out-of-custody youth and in-custody/out-of-custody adults (age, offence, charges, to be determined).

Justice Centres

Ministry of the Attorney General



Land-Based Healing: Initial Goals & Future Planning

Initial goals include seeing individuals by the **thousands** out on the land (tracking how various program/event opportunities are accessed). Future planning includes –

- Building on partnerships that **emphasize prevention work with youth** via local schools, the Kenora Youth Wellness Hub as well as traditional Anishinaabe Knowledge Keepers, Healers, and Elders
- **Building access to land** as a component of diversion alongside Kenora's Restorative Justice Committee
- **Ensuring ongoing support** for individuals from Kenora's Bail Residency Program and other identified justice involved youth and adults, including Kenora Justice Centre clients.

The most popularly accessed components of the property by justice-involved and/or at-risk youth and adult individuals include the **Equine Centre, Community Garden, and Hiking/Walking** throughout the property as a client of KCA's **Mental Health and Addictions Program**.



KCA 2021 Fall Harvest



KCA 2021 Fall Harvest



Journey to Restorative Healing: Equine Centre



Bringing the powerful therapeutic presence of horses to people of all ages and communities in the Kenora region, Kenora Chiefs Advisory has acquired 15 horses and ponies that are used in the delivery of trail riding throughout a system of wooded trails and fields, **Equine Assisted Learning (EAL)** programming, and in future development, Equine Therapy – all which aim to support individuals in exploring and resolving trauma, as well as supporting children with behavioural and developmental needs.

The Equine Centre's programming is offered to justice involved individuals to **support self (re)connection**, manage and address anger, and support mental health and well-being challenges such as grief and loss, anxiety, depression, and childhood and intergenerational trauma.



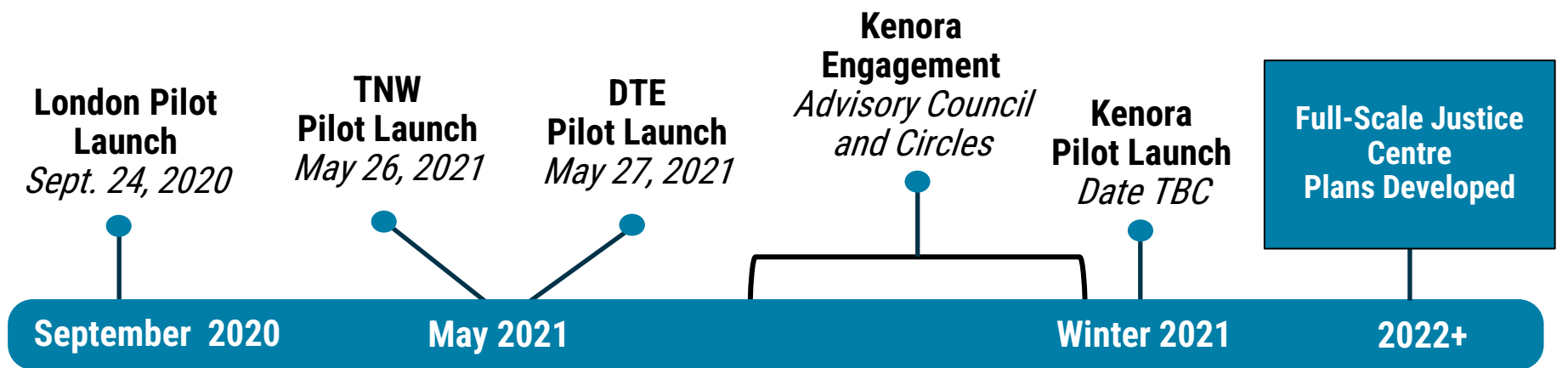
Grand Council Treaty #3 Kaakewaaseya Justice Services



- The Kenora Justice Centre Pilot will work in collaboration with GCT#3 Justice Services which provides critical supports to the existing criminal justice system in Kenora and works directly with First Nations' justice teams to divert pre- and post-charge offences in community-based processes in Grassy Narrows, Lac Suel, Naicatchewenin, Nautkamegwanning, Onigaming, Wabseemoong and Rainy River First Nations. Goals include:
 - Support healing and accountability within communities; and
 - Reduce the number of Treaty#3 members charged and in jail.

PROGRAM	PROGRAM GOALS
Youth Reintegration	<ul style="list-style-type: none"> • Promote healing and accountability within communities • Have youth supported during and after probation
Indigenous Bail Verification and Supervision	<ul style="list-style-type: none"> • ID the availability of a surety • Provide verified, neutral and factual information about an accused person at bail • Provide supervision, aftercare and referral services for individuals released from custody
Gladue Report Writers/ Gladue Aftercare	<ul style="list-style-type: none"> • To make recommendations for alternative sentencing such as restorative justice, healing circles, culturally-appropriate treatment options. Assist community members to follow through with Gladue Report recommendations.
Indigenous Support Network	<ul style="list-style-type: none"> • Assist in the development of a Victim services program that is culturally sensitive and holistic, with support and referrals in place within the communities • Provide clients and families with the tools, knowledge, and guidance for self-empowerment during their journey of healing • Assisting clients to have direct access too culturally appropriate services • Work closely with clients and communities, building strong, trusting relationships • Ensure clients' immediate personal safety takes priority and put social services in place to assist in the prevention of suicide and self-harm
Indigenous Justice Liaison	<ul style="list-style-type: none"> • Provide information to First Nations regarding Legal Aid Services • Help throughout the Pardon Application Process • Promote Aboriginal people's involvement with Jury Duty • Facilitate discussion and meetings with people in communities

Justice Centre: Projected Timelines



Stage 1 Capital Planning - Full Scale/Permanent Justice Centre Plans
Exploratory process to identify functional programming for four long-term Justice Centre facilities.

Cross-Sector Evaluation
Cross-sector data analysis to understand individual and community impacts. Working with external experts to develop Indigenous evaluation framework for the Kenora Justice Centre Pilot. Participatory and strength-based approach in collaboration with local community.

* Kenora pilot launch date will be subject to changing implications of COVID-19.

Justice Centres – Key Contacts

Name	Position
Dayna Arron	Executive Director
Holly Loubert	Crown Counsel
Patrick Mitchell	Policy Counsel
Michael Brooks	A/Manager Justice Centres
Mohamed Hameer	Justice Centre Business and Fiscal Planning Lead
Nida Ali	Project Coordinator
Miriam Henry	Toronto Northwest Justice Centre Crown
Edyta Szelazek	Toronto Northwest Justice Centre CMC
Kate Matthews	Toronto Downtown East Justice Centre Crown
Scott McKean	Toronto JC Strategic Community Lead Embedded part-time from City of Toronto
Kenny MacDonald	Toronto Downtown East Justice Centre CMC
Noelle Brady	London Justice Centre Crown
Kelly Geraci	London Justice Centre CMC
Rebecca Senior	Kenora Justice Centre Crown
Carla Parnell	Kenora Justice Centre CMC