

Ministry of the Attorney General

Ontario's Justice Centre Pilots:

Spotlight on the Toronto Downtown East Justice Centre Pilot

Provincial HSJCC Conference

July 20, 2022

Justice Centres

Ministry of the Attorney General

Ontario 

Presentation Overview

1. Introduction

- Background
- What is a Justice Centre?
- Current Context

2. Toronto Downtown East Justice Centre Pilot (Launched May 2021)

- Focus on Community Health
- Participant Pathway
- Early Outcomes

- **The Honourable Justice Mary Hogan of the Ontario Court of Justice**

- **Sound Times Support Services**

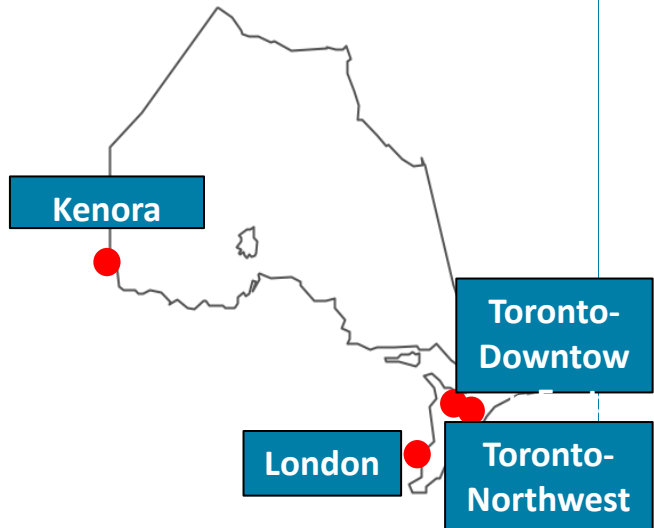
- **Inner City Health Associates**

- **Surrey Place**

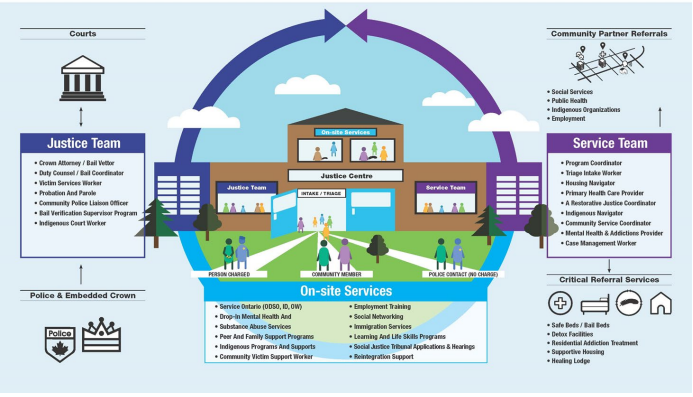
- **John Howard Society of Ontario**

Background

- Ontario is **innovating how justice is delivered** in vulnerable and marginalized communities by introducing the province's first Justice Centres.
- As of September 2020, the province began implementing a **new community court model** which increases access to justice and targets the factors underlying criminal behaviour.
- This initiative is currently taking place in 4 locations across the province: Toronto Northwest, Toronto Downtown East, Kenora and London.
- The model draws from **innovative justice practices around the world**, while addressing the unique needs of these distinct communities.
- In order to assess how the model could benefit these four sites, MAG-CLD conducted **Community Needs Assessments** that resulted in a shared provincial vision for integrated service delivery as well as four local adaptations.



A VISION FOR ONTARIO JUSTICE CENTRES: SYSTEM-WIDE TRANSFORMATION



Current Context

- Ontario is **beginning this work with initial Pilots**, which will be evaluated in order to assess whether and how the model should be expanded.
- Through a **participatory design process**, each Pilot is being developed to reflect the local circumstances and needs of the community they are meant to serve.
- Following the onset of **COVID-19**, MAG-CLD worked with community and justice participants to identify required pilot adaptations that promote access to justice and address the accumulation of cases in the OCJ to:
 - Include both virtual and remote court proceedings;
 - Reduce the number of individuals held on remand; &
 - Improve continued access to in-person wrap-around community-based supports with a focus on connecting people to virtual services.

Toronto Downtown East: Focus on Community Health

Launched May 27, 2021

The Downtown East (DTE) Justice Centre seeks to stabilize adult offenders living at the **intersection of homelessness, mental health and substance abuse** (with priority given to those who do not qualify for existing specialized courts or diversion programs)

Launched May 2021, the DTE Justice Centre is a **hybrid justice-and-health-centre** that accelerates access to justice and critical wrap-around services to prevent the **most complex and high-needs** clients at the intersection of poverty, homelessness, mental health and addictions from cycling through the criminal justice system by addressing criminogenic risk factors with **on-site specialized health services including primary care, psychiatry, addictions medicine and developmental disability supports.**

Context for Action

- **~77% of 51 Div cases at CP start in bail** (vs 39% provincial average) & of those 63% have bail granted (*MAG Recovery Report, 2021*)
- **Almost 50% of CP cases** – a disproportionate amount compared to other jurisdictions – **are property or AOJ-related** (*ICON, 2021*)
- Between July 2020 and June 2021, nearly 1 in 4 opioid overdose calls to paramedics happened in DTE neighbourhoods (*Toronto Overdose Information System, 2021*)

Justice Centres

Ministry of the Attorney General

Toronto Downtown East: Focus on Community Health

Accelerated & Enhanced Intake and Resolution Processes

- All participants are scheduled for a **First Appearance within 1-2 weeks of arrest** (vs. 4-6 weeks at College Park Courthouse)
- Direct releases in appropriate cases to the DTE Justice Centre are facilitated by the **51 Division Embedded Crown** to reduce remand populations and prevent unnecessary bail hearings



Supports Designed to Maximize Engagement with Hardest-to-Reach Population

- City of Toronto-funded John Howard Society-operated **Housing Support Services** including a **dedicated in-court Housing Worker**
- **On-site access to supported video-suite** to facilitate remote court appearances
- Case management and care coordination provided by Sound Times, a **100% survivor-led and staffed outreach organization**
- **Primary care, psychiatry and addictions medicine** services provided by Inner City Health Associates, the **largest homeless health organization in Canada**
- Enhanced case management provided by Surrey Place, an organization affiliated with the **University of Toronto** that is dedicated to providing **specialized services to persons with developmental disabilities**



DTE Participant Pathway



Legal Advice

Opportunity for accused to consult with duty counsel

Embedded 51D Crown

- Provides advice to TPS on whether new arrests should be held for bail or directly released to the JC
- Liaises with dedicated JC Sound Times Worker.

Dedicated JC Community Case Managers

- Needs assessment and service planning
- Access to clinical care and service coordination
- In-person access to Sound Times for virtual access and group support

JC Crown & CP Bail Vetter

- Work collaboratively to identify eligible accused held for bail & facilitate quick release

Needs Assessment

- Perform one-on-one Intake Assessment
- Identify areas of need (e.g. housing, MH&A, etc.)



DTE Courthouse Processes

Justice Services

- Participants' charges are individually and judicially case managed from first appearance to disposition
- Continuous judicial case management allows for effective participation and compliance monitoring
- Dedicated duty counsel is available to all participants
- Dedicated VWAP is available to provide enhanced victim supports
- Virtual access to JC Court is available via Sound Times

Needs-Based Individualized Support Plans

- Sound Times/Surrey Place case managers work with the participant, duty/defense counsel and the JC Crown to develop a needs-based plan that 'meets people where they're at'
- The DTE adopts a step-by-step approach to individualized rehabilitative plans: realistic expectations, adaptability and low-barrier access are key
- Plans are reviewed and approved by the participant, their lawyer and the JC Crown

Case Management Services, On-Site Supports & Referrals

- Community case managers offer in-house, on-site supports and make referrals to trauma-informed, community-based supports to address risk factors identified during the Intake Assessment

Rapid Access to Primary Care Before First JC Court Date

Crown Pre-Trial

Primary Care & Wrap-Around Services

Primary Health Care

- ✓ Accelerated access to psychiatry, mental health care, primary care, and addictions medicine specialist

ICHA



Wrap-Around Services & Supports

- ✓ Case Management & Systems Navigation
- ✓ Housing Navigation
- ✓ On-site Income Support & Taxes
- ✓ On-site ID Replacement & Banking Support
- ✓ On-site social support network

Why Justice Centres?

- Introduced in over 70 communities around the world, Justice Centres **move justice out of the traditional courtroom and into a community setting**. These Centres bring together justice, health, employment, education and social services to address the root causes of crime, break the cycle of offending, and improve public safety and community well-being.
- **Tailored to the unique needs of local communities**, these centres co-locate justice facilities (e.g. courtrooms) with front-end supports (e.g. primary healthcare, mental health supports), prevention services (e.g. employment and skills training) and community re-integration supports (e.g. peer counselling)
- The Justice Centre model **improves outcomes for offenders, victims and communities** by holding individuals accountable for their offences while connecting them to services that reduce the risk of re-offending. Central to the approach is a commitment to better support victims and communities harmed by crime.
- Through Justice Centres a **whole-of-government approach** can promote cross-sector collaboration and multi-agency supports for common clients in order to address the intersecting risk factors that lead to chronic offending, as well as to support improved capacity, coordination and integration with other provincial service systems and sectors, such as health, social services, and housing.

Sound Times Support Services is an initiative that has been providing mental health and addiction services in downtown Toronto, Ontario for 30 years. We are uniquely led and operated by people who have personal experience in the mental health, addiction and criminal justice systems.

- Services:
 - Resource Centre
 - Mental Health and Justice Prevention
 - Mental Health and Justice Diversion and Court Support
 - Release from Custody
 - Addiction/Harm Reduction Services
 - Psychiatry
 - Primary Care
 - Imbedded Legal Clinic

Community Justice Centre

- Location for virtual court access
- Dedicated case management
- Structured group work
- Ongoing support post discharge
- FY 21/22
 - 251 clients referred
 - 108 of those were existing clients



Just Health: Integrated, Interdisciplinary, and Intersectoral Innovation

- **Health, Homelessness and Justice:**

- Social and Physical Trauma of Homelessness
- Reciprocal Relationship of Health and Homelessness
- Significant Complex Concurrent Medical, Mental Health, and Substance Use Disorder +/- ABI, DD
- Failure of Society: Preconditions of Freedom/Autonomy (J Waldron, 'Liberal Rights' 1993)
 - Resource Restriction, Disconnection from Supports, Negative Social Capital, Cognitive Injuries/Disability, Substance Use, Victimization and Discriminatory Harm from Health/Social Systems predispose to:
 - HIGH RISK CONTEXT, HIGH RISK SITUATIONS, LIMITED SKILLS/RESOURCES = CRIMINALIZATION

- **Inner City Health Associates: Specialized Community Clinical Services**

- >120 Physicians, 40 Nurses, 12 Departments, 70 Networked Clinical Sites incl Street Outreach, Drop-Ins, Shelters, Resettlement Programs, Supportive Housing, Community Agencies, Family Health Org/Team, Virtual Care System
- Justice Centre Clinical Team: Primary Care Medicine, Psychiatry, Specialist Substance Use Care Team

Just Health: Integrated, Interdisciplinary, and Intersectoral Innovation

- Inner City Health Associates : JC Supports and Pathways
 - Rapid Referral and Intake:
 - Indirect from JC: Needs Assessment Via Case Management
 - Clinical Assessment < 1 week
 - Roles:
 - Primary Care: Rapid Comprehensive Clinical Assessment, Care Coordination and Master Clinical Care Plan (All Domains: Medical, Psychiatry, Substance Use)
 - Psychiatry: Comprehensive Assessment, MH Care Coordination, Treatment Plan, Shared Care with Primary Care
 - Substance Use Care (On-Call, Direct On Site, Specialty Hub): Continuum of specialist services incl. Harm Reduction/Safer Supply, Risk Mitigation, Ant-Craving, Substitution
 - Coordination: Clinical Coordination and Integration with Case Management, Social Supports
 - Communication: Specialized Care Plan to CM to Inform JC Processes

SURREY PLACE

- Surrey Place provides specialized clinical services specific to individual needs and aims to promote health and well-being in the Toronto region
- We help individuals across the lifespan with developmental disabilities and autism spectrum disorder reach their full potential. We offer a variety of groups and workshops for clients, families and caregivers, as well as extensive education and consultation services to community agencies
- Our comprehensive programs and services range from assessment, diagnosis and one-on-one treatment to family counselling and group support and are provided by a broad network of clinicians and professionals

What is Developmental Services Ontario Toronto Region (DSOTR)?



- The single point of access for all adults with a developmental disability who wish to access Ministry of Children, Community and Social Services (MCCSS) funded *adult* developmental services and supports
- The DSO connects adults 18 + with a confirmed diagnosis to ministry-funded supports available in the community
- We partner with 211 to provide 24-hour intake service in all languages
- Please contact us at 1-855-372-3858/dsotr@surreyplace.ca or initiate registration at <https://dsontario.ca/>

Developmental Justice Case Manager

- Works closely with individuals in the Justice Centre who either have, or are believed to have, a developmental disability
- Prioritizes individuals waiting for a psychological assessment to see if they are eligible for DSO services
- Works with individuals to create an individual plan from the goals they wish to achieve while with the Justice Centre
- Assists with integrating supports to address some of the factors which have led to the individual's reoccurring contact with the justice system

John Howard Society Toronto Housing Support Worker

- The Society's focus is geared to *effective, just, and humane responses to crime and its causes*. By promoting the fair and humane treatment of all incarcerated persons and seeks to ensure that all forms of detention and imprisonment comply with relevant legal and human rights standards.
- Reintegration and Institutional Services (RIS)
 - System Navigators
 - Harm Reduction Trailer Team
 - Mental Health & Addiction Peers Support
 - **Housing Services**



Reintegration and Institutional Program Overview

- SNP – CRO referrals.
- RST/IS – TSDC and Community partners.
- MAPS – Probation referrals.
- **HOUSING (PIP / H4G)**
 - a. Private Market Units (PIP)
 - b. Subsidized Units (H4G)
 - c. Follow up & Case Management
 - d. Access to Furniture Bank
 - e. Income, training and educational supports



Q & A