

Ministry of Health

P-HSJCC Housing & Justice Forum

Discussion topics on Justice Supportive Housing

Mental Health and Addictions Programs Branch

February 26, 2020

Presentation Outline

- Overview of Ministry of Health funded Supportive Housing
- Types of Justice Supportive Housing programs and where they fit in the mental health and justice cycle
- Service pathways
- Who are the clients we serve?
- Supports
- Considerations
- Questions and discussion

Overview of Ministry of Health Funded Supportive Housing

- The Ministry of Health (MOH) funds the delivery of approximately 16,000 supportive housing units by 150 transfer payment agencies across Ontario.
 - ~14,200 units are directed to people living with mental health and addictions (MHA) issues.
 - The remaining units are directed to a range of populations including: high-risk seniors; people with physical disabilities; people living with acquired brain injuries; and, people living with HIV/AIDS.
- The MOH is modernizing the Homes for Special Care (HSC) Program, which is based on a custodial model and delivers room and board via private, for-profit operators. The new program, Community Homes for Opportunity (CHO) is working with operators and community MHA agencies to better align programs and services with best practices.
- In 2019, the MOH invested ~\$25M in the preservation and expansion of supportive housing programs, including:
 - ~400 new Mental Health and Justice Program units; and,
 - ~550 new units for people living with MHA issues. This investment builds on a 2017 investment that created ~590 units for the same population (total ~1,150 units).

Mental Health & Justice Programs



Zone 1: Police and Court Supports

- Safe Beds
- Addiction Specialists
- Mobile Crisis Rapid Response integrated with Safe Beds
- Mental Health Court Support / Diversion
- Post-Court Transitional Case Managers



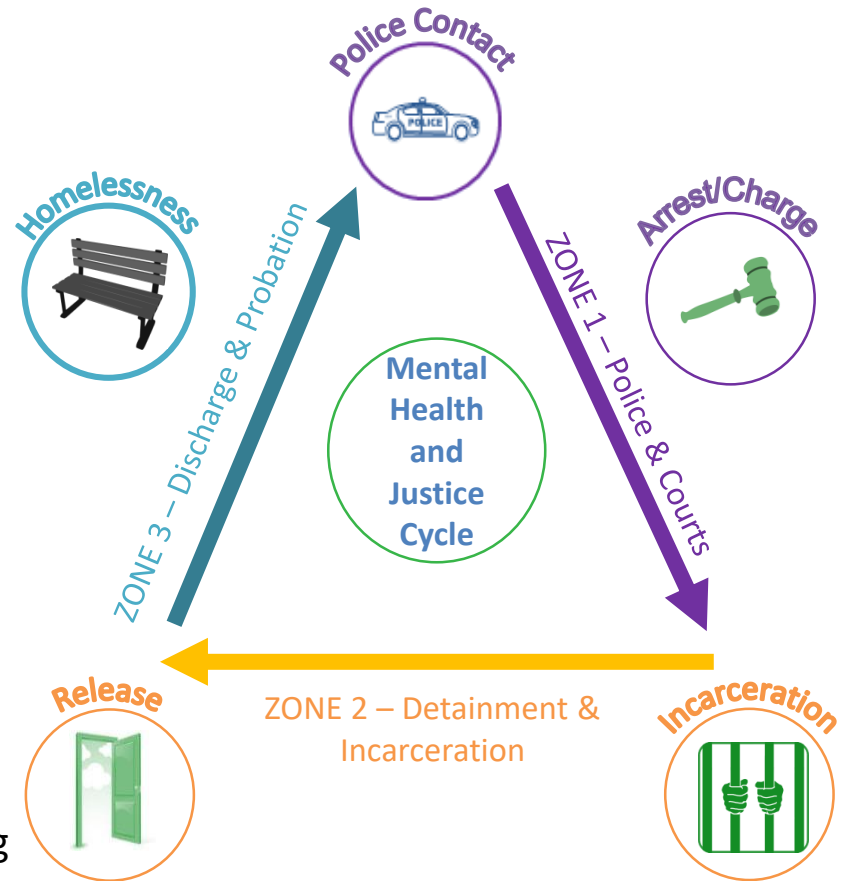
Zone 2: Detainment & Incarceration Supports

- Acute Care Stabilization Beds
- Forensic Early Intervention Service



Zone 3: Post-Incarceration Supports

- Release From Custody Workers
- Mental Health and Justice Supportive Housing





Justice Supportive Housing

Having a mental health and/or addictions issue and being involved in the justice system presents unique challenges that make accessing affordable rental housing extremely difficult for this vulnerable population. Providing access to supported, affordable and permanent housing aims to improve overall stability and decrease contacts with the justice system, helping to prevent incarceration.

- Program funding, which rolled-out in 2019-20, aligns with recommendations made in the Closed Quarters report and aims to improve access to quality, suitable and affordable rental housing while providing the support and treatment services needed to maintain housing and access local, community-based resources, which can reduce the chances of becoming re-involved with the justice system.
- Many supportive housing providers manage both, the rent supplement programs and the mental health support services to help people maintain their housing.

Service Pathways into Justice Supportive Housing (JSH)

Mobile Crisis/Police



Hospitals



Mental Health Courts
Jails and Detention
Centres



Housing:

- short-term/crisis residential



- Transitional housing

- Permanent supportive housing



Clients Served in Justice Supportive Housing

- Mental health and/or addictions issues (diagnosis not required)
- Concurrent disorder (mental health and addictions issues)
- Dual diagnosis (mental illness and developmental disability)
- Acquired Brain Injury, Traumatic Brain Injury
 - Trauma** (physical, emotional, sexual, inter-generational, chemical, etc.)
- Fetal Alcohol Spectrum Disorder
- Involvement in the justice system (sometimes cycling in and out of detention/custody) and required to adhere to court orders/dispositions (e.g., probation/ parole conditions, injunctions, trial dates, bail conditions, etc.)

**Note that multiple forms of trauma may be a factor in any of the above

Supports

Mobile Crisis/Police



Hospitals



Mental Health Courts

Jails and Detention Centres



Addictions Specialists
Safe bed clinicians, including peer support; Transitional Case Managers

Housing:

- short-term/crisis residential



- Transitional housing
- Permanent supportive housing

JSH
service
provider

Salvation Army
Elizabeth Fry
John Howard Society

Mental Health Court Support
Post-Court TCMs
Release from Custody Workers

Considerations

- Need for increased support capacity across service sector:
 - More MHA generalists?
 - More cross-trained (Developmental Services Worker, Behavioural Support Workers, Concurrent Disorder Workers, etc.) specialists?
- Ability to adapt and adjust services and supports to physical needs as well as cycles of illness and wellness:
 - Frequency, volume, specialization of supports
- Specialization of housing structures themselves
 - Dedicated buildings, scattered units, on-site support, etc.
- Enhanced partnerships with justice service providers, such as discharge planners, probation, parole, bail verification, etc.

Questions?

The background is a solid blue color with several large, curved, overlapping shapes in lighter shades of blue, creating a modern, abstract design.