



United Way



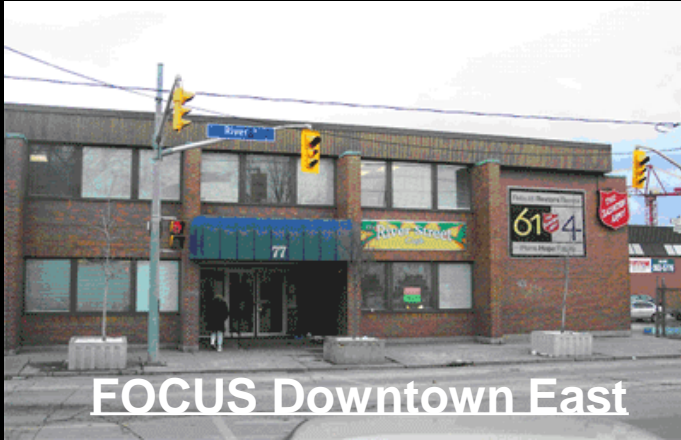
 **Toronto**

# FOCUS Situation Tables

**Sgt. Brian Smith**  
Toronto Police Service  
Divisional Policing Support Unit  
FOCUS Situation Tables &  
Countering Violent Extremism Coordinator  
[Brian.smith@torontopolice.on.ca](mailto:Brian.smith@torontopolice.on.ca)  
416-808-0145  
Twitter: @CopSmithTPS



# ***FOCUS Toronto - Situation Tables***



**FOCUS Downtown East**

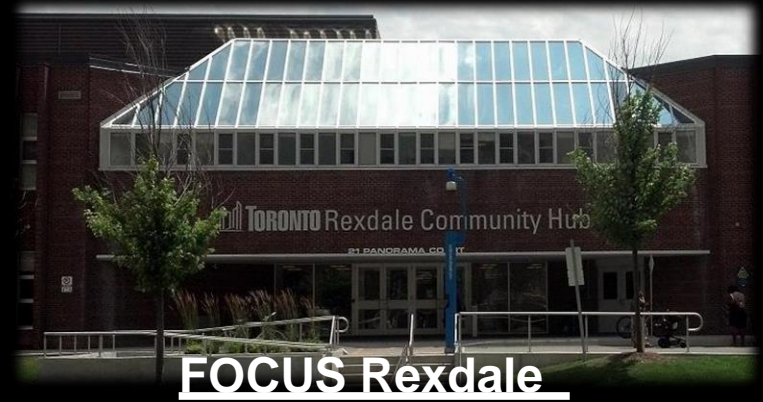


**FOCUS North Scarborough**

## **Risk-Driven Collaborations**



**FOCUS Downtown West**



**FOCUS Rexdale**

An iceberg floating in a blue ocean under a blue sky with white clouds. The tip of the iceberg is above the water line, while the much larger, jagged base is submerged. The text '911 EMERGENCY' is on the tip, and a list of social issues is on the submerged part.

**911**  
EMERGENCY

# Tip of the Iceberg

Addictions

Mental Health

Unemployment

Poverty

Gang Involvement

Homelessness

# **What is FOCUS?**

- \*Furthering Our Communities, Uniting Services**

- \*Multi-disciplinary approach to reducing crime and improving community resilience**

- \* Coordinated action to support individuals, families or places that face heightened levels of risk**

- \*Goal of identifying & addressing systemic issues**

# Agencies Sitting at FOCUS North Scarborough

- City of Toronto - Community Crisis Response Unit
- Toronto Police - DPSU
- Agincourt Community Services Association
- Canadian Training Institute
- Catholic Children's Aid Society - Toronto
- Children's Aid Society of Toronto
- City of Toronto - Streets to Homes
- City of Toronto - Toronto Employment and Social Services
- City of Toronto - Specialized Program for Interdivisional Enhanced Responsiveness to Vulnerability
- East Metro Youth Services
- Eva's
- Fred Victor - Community Support - East
- Ministry of Children and Youth Services - Youth Justice Services
- Ontario Disability Support Program - Ministry of Community and Social Services - Toronto
- Scarborough Centre for Healthy Communities
- Springboard - Toronto
- The Scarborough Hospital - Crisis Team
- The Scarborough Hospital- SACC - DV
- Toronto Bail Program
- Taibu Community Health Centre
- Toronto Catholic District School Board
- Toronto District School Board
- Toronto Community Housing Corporation - Resident Access and Support
- Toronto Community Housing Corporation - Community Safety Unit
- Surrey Place Centre - Toronto Network of Specialized Care
- Toronto Paramedic Services
- Toronto Police Service - 42 Division
- Toronto Public Health
- Transcare Community Services
- Victim Services of Toronto

# What type of situations can come to a Table?

## **Acutely Elevated Risk (AER):**

*Situations deemed to merit risk  
intervention because of a high probability  
that they **are** or will eventually become  
emergencies involving social disorder,  
crime, or victimization.*

*Immediate Need*

# Information Sharing

*\*Consent*

*\*De-identification*

*\*Need to know*

*\*Non-consensual disclosure*

*\*Agreement*



Governed by: *FIPPA, MFIPPA, PHIPA*

Supported by: *Information Privacy Commissioner, (FOCUS is the “Gold Standard”)*

# Intervention Process

1



***FOCUS agencies** present a situation of **AER** in a masked and banded way.*

2



*The **FOCUS agencies** then decide if the situation is in fact **AER** as a “consensus of experts.”*

3



*Originating agency reveals more information in order to deem which agencies will be best suited to take part in an intervention.*

4



*Lead & supporting agency identified and only those agencies share information off-line in order to conduct the intervention.*



# FOCUS Toronto

*Agencies meet weekly to provide risk driven, targeted wrap around supports to those in need (Acutely Elevated Risk).*



## Prevention & Intervention Process

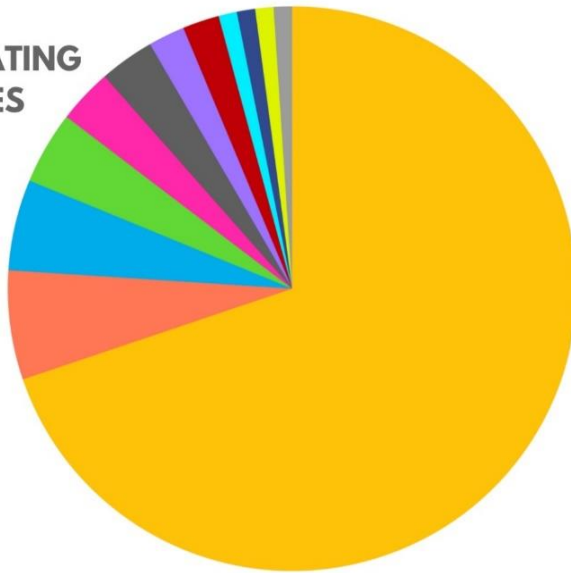
*A Situation is brought to the table by a FOCUS Agency*



WRAP AROUND SUPPORTS

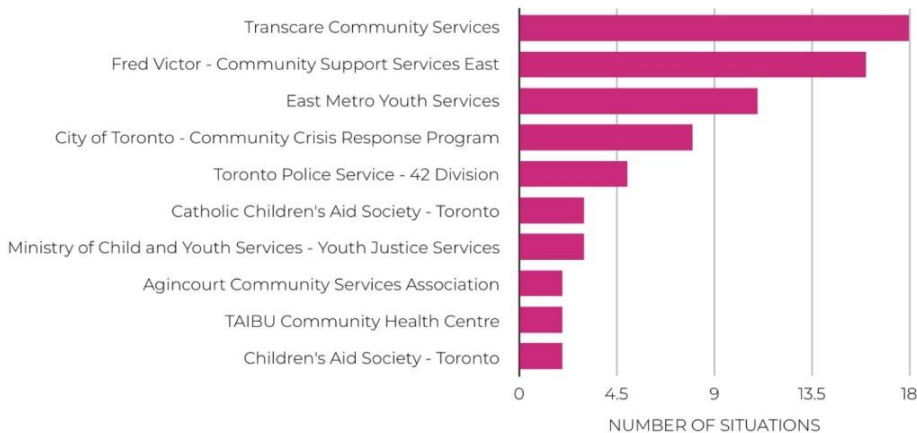
# FOCUS North Scarborough

## ORIGINATING AGENCIES

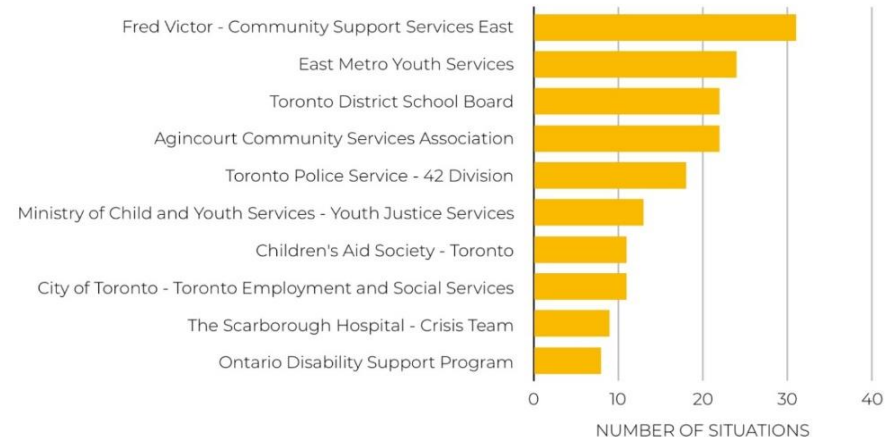


- Toronto Police Service - 42 Division
- City of Toronto - Community Crisis Response Program
- Ministry of Child and Youth Services - Youth Justice Services
- Toronto Community Housing Corp - Resident Access and Support
- Ontario Disability Support Program
- Catholic Children's Aid Society - Toronto
- Toronto District School Board
- Children's Aid Society - Toronto
- Agincourt Community Services Association
- East Metro Youth Services
- TAIBU Community Health Centre
- Toronto Paramedic Services

## TOP 10 LEAD AGENCIES



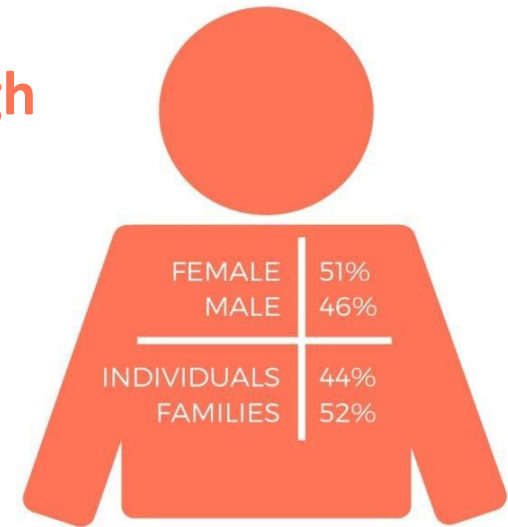
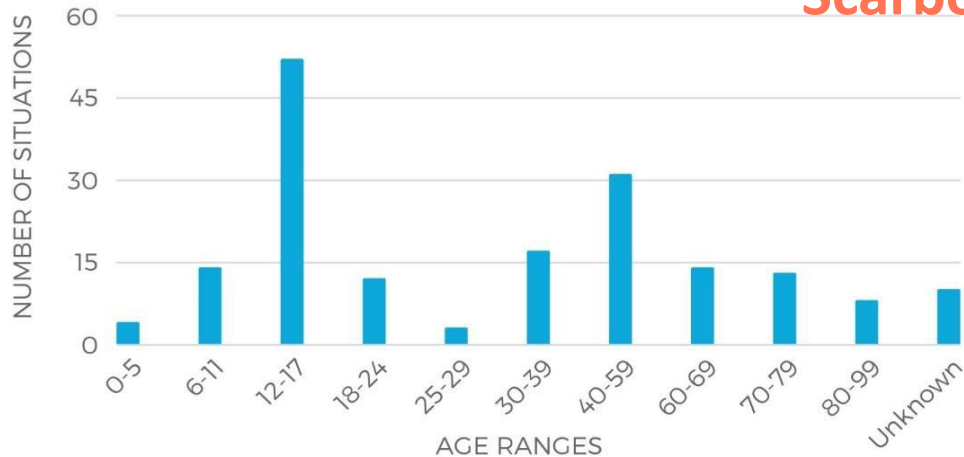
## TOP 10 ASSISTING AGENCIES



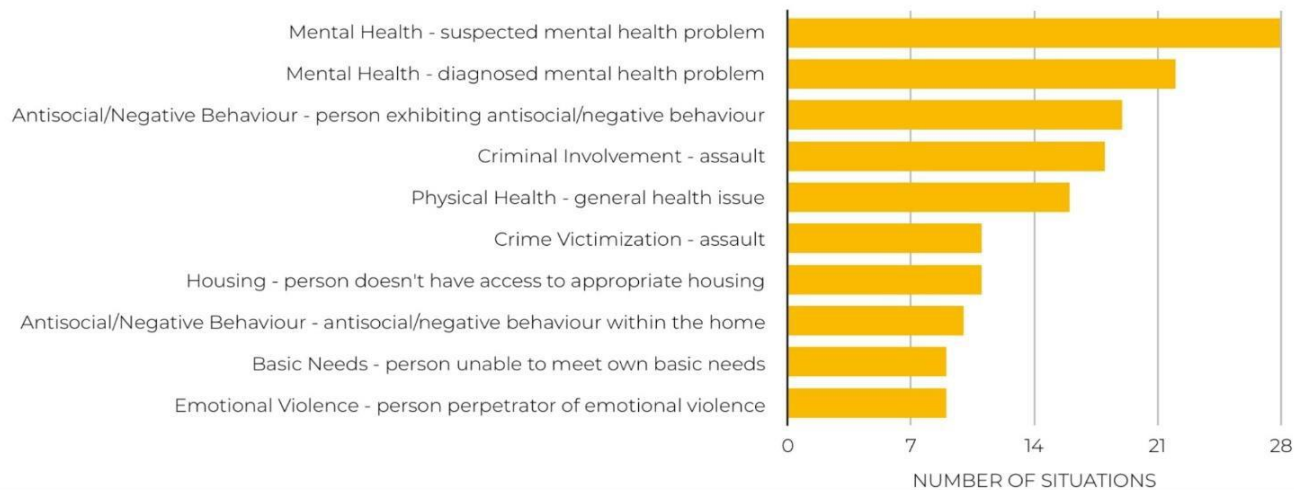
# WHO WE ARE SERVING

January 1 to November 8, 2017 total number of situations: 97

**FOCUS**  
**North**  
**Scarborough**



## TOP 10 RISK FACTORS



# FOCUS TORONTO Consent



FOCUS Table	Consent Before Discussion	Consent After Discussion
FOCUS Rexdale	92% (87 out of 94)	7% (7 out of 94)
FOCUS North Scarborough	82% (80 out of 97)	18% (17 out of 97)
FOCUS Downtown West	80% (62 out of 78)	20% (16 out of 78)
FOCUS Downtown East	83% (124 out of 149)	17% (25 out of 149)



# Client & Family Member Impacts

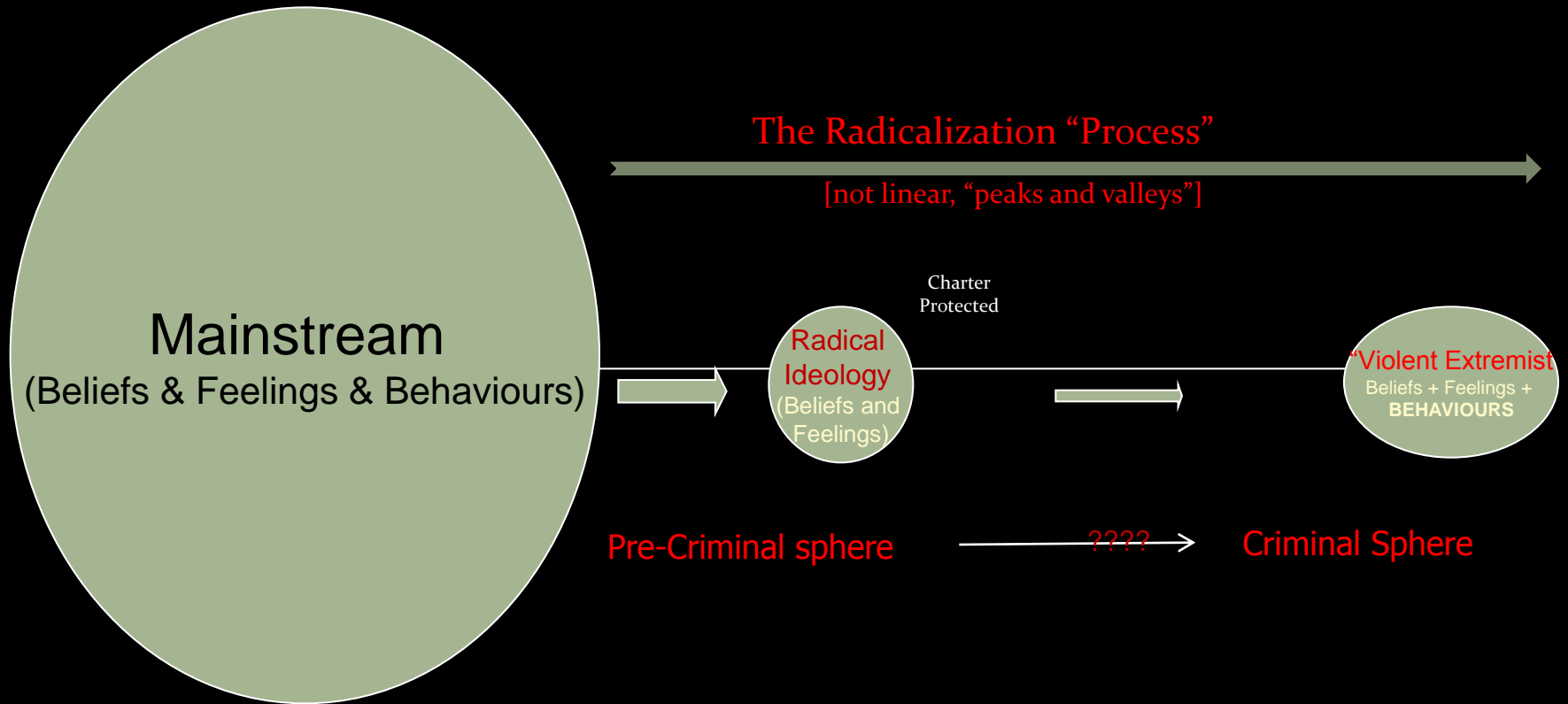


- \* Anxiety, stress, bullying
- \* **Alcohol & substance abuse**
- \* Violence
- \* **Self-harm, suicidal thoughts / attempts**
- \* Aggressive behaviors of client, between client & peers / neighbors
- \* **Inappropriate interventions e.g. child welfare**
- \* Calls to police, arrests



- \* Ability to utilize coping mechanisms and support
- \* **Feeling of support, knowledge of rights, access to ongoing support**

# Countering Violent Extremism(CVE) Prevention/Intervention



# Thank You!



Sgt. Brian Smith  
Toronto Police Services  
Divisional Policing Support Unit  
FOCUS Situation Tables Coordinator  
[Brian.smith@torontopolice.on.ca](mailto:Brian.smith@torontopolice.on.ca)  
416-808-0145  
Twitter: @CopSmithTPS