

A photograph showing a person from behind, wearing a grey long-sleeved shirt and a black watch, writing on a white sheet of paper on a dark wooden table. In the background, another person's hands are visible, gesturing during a discussion. The scene is brightly lit, suggesting an indoor meeting or conference.

Provincial HSJCC Housing and Justice Forum

PANEL DISCUSSION: PROMISING
PRACTICES IN SUPPORTIVE HOUSING

PROMISING PRACTICES REPORT

- *Promising Practices* : 12 Case Studies in Supportive Housing for People with Mental Health and Addiction Issues



Promising Practices

12 Case Studies in Supportive Housing for People with Mental Health and Addiction Issues

April 2018



- Published in April 2018, the report was a joint project of AMHO, Wellesley Institute, CMHA Ontario

www.amho.ca/promisingpractices



PROMISING PRACTICES REPORT

Objectives

1. Provide implementation support to supportive housing providers
2. Compile an inventory of good practices and successful examples of mental health and addictions supportive housing
3. Establish an expert panel and peer advisory group that will provide ongoing support to service providers and service managers implementing additional supportive housing



PROMISING PRACTICES REPORT

Background

- Supportive housing provides many Ontarians who live with mental health and addiction issues with long term, permanent housing that is both affordable and supported.
- Many of these individuals have complex needs that cross the boundaries of health, justice and social services.
- Resources for supportive housing often involve many ministries, local planning bodies (such as LHINs and Service Managers), municipal and federal components.
- In spite of the complexities in funding, community service providers have responded with innovative and creative solutions to address the unique situations in their communities.
- Many examples of such innovation are found within the case studies highlighted in this report.



PROMISING PRACTICES REPORT

Case Study: Regeneration Step Up

- The Step Up program consists of 20 supportive housing units located in a large high rise building for tenants transitioning out of High Support Housing.
- Provides supportive housing, case management services and peer support. A wide range of supportive housing options across the housing continuum are available.
- Program began as a response to the need to improve “flow” in high support housing in order to move alternate level of care (ALC) patients from the Centre for Addiction and Mental Health (CAMH) into the community.
- Tenants in high-support housing could be helped to move to other supportive housing and thereby free up high-support units for people in need.



PROMISING PRACTICES REPORT

Case Study: Houselink Steps to Support

- 40 year history in providing permanent, affordable, supportive housing.
- Housing is provided in partnership with Toronto Community Housing Corporation (TCHC), which is funded by the City of Toronto, and program supports are funded through the Toronto Central LHIN.
- Program works in TCHC buildings identified as having many tenants with complex health problems including mental health and addictions issues.



PROMISING PRACTICES REPORT

Case Study: CMHA Lambton-Kent Supportive Housing Program

- Main partnership is with the private landlords, and CMHA Lambton-Kent responds to landlords very quickly if there is a tenant-landlord issue. This is key to maintaining positive relationships.
- CMHA Lambton-Kent also has partnerships with the local homeless shelter. Staff visit shelter twice a week to talk to clients about their housing needs and assist them to find housing where possible, or add them to the waitlist for their supportive housing program.
- CMHA Lambton-Kent also has a partnership with the local hospital to participate in discharge planning on the psychiatric unit, including working with people on their housing needs.



PROMISING PRACTICES REPORT

Key Themes

1. More affordable housing

- ✓ need to acquire more stock, address long waiting lists

2. Greater standardization

- ✓ better alignment of supports to housing and more standardized assessment protocols to measure needs to health outcomes

3. Better system coordination

- ✓ different funding sources often have different or conflicting priorities



PANEL DISCUSSION

What does mental health and addictions supportive housing look like for Ontarians involved with the criminal justice system?



OUR PANELISTS

Alicia Beaudoin

Residential Coordinator/Property Manager

Rita Thompson Residence, Enhanced Supportive Housing
John Howard Society of Ottawa

Jeff Morgan

Program Manager

Haley House
Peterborough Reintegration Services



John Howard Society Ottawa

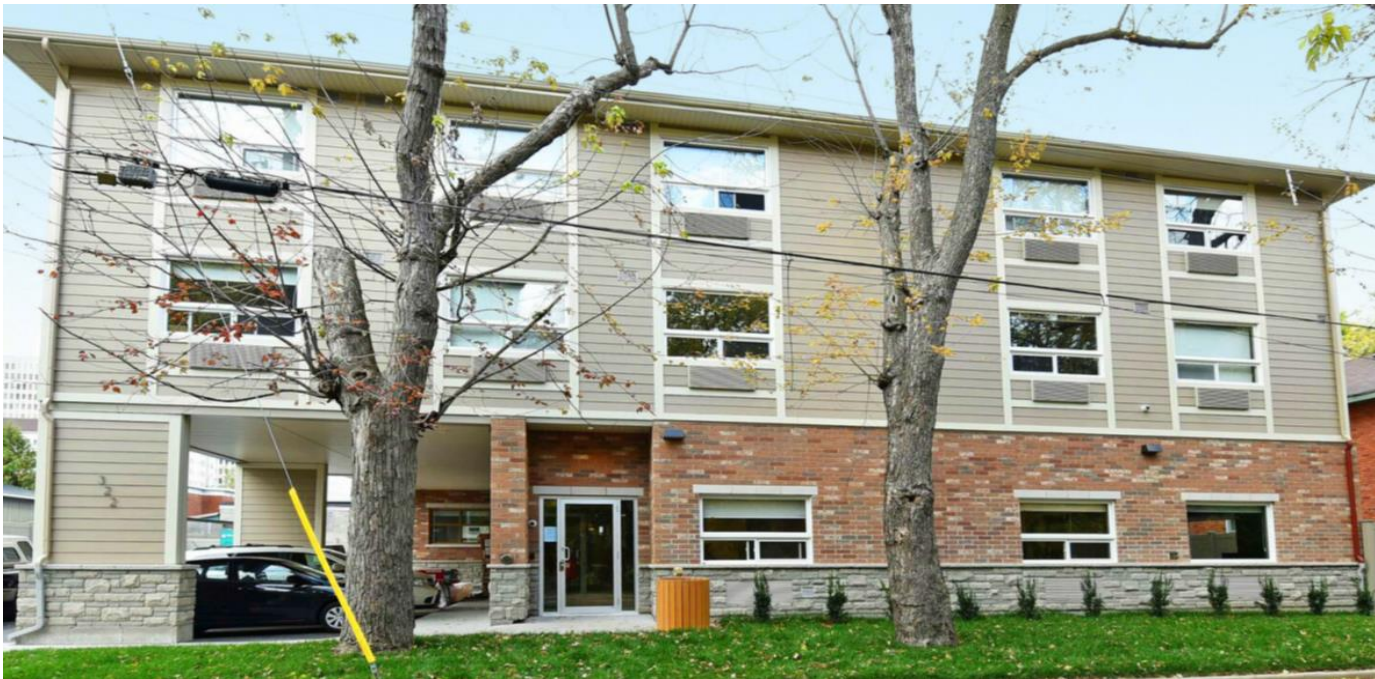
Rita Thompson Building

- Operating since 2015, John Howard Ottawa provides on-site 24/7 supports including case workers from JHS and medical services provided by Ottawa Inner City Health (OICH).
- Clients include men who have experienced chronic homelessness and complex, co-occurring issues that impact overall housing stability.
- Goal is reducing tenant involvement in the criminal justice system and hospital through diversion.



John Howard Society Ottawa

Rita Thompson Building



Haley House

- Located in Peterborough, Haley House is a supportive home for older federal inmates released on parole with physical or mental health needs.
- Residents have access to mobility supports, on-site case management, personal support workers, physicians and psychiatrists, as well as a personal chef/counsellor.
- Casework manager develops a re-integration plan for each resident and helps find long-term supportive housing while meeting parole conditions.
- Haley House seeks to provide a warm and welcoming atmosphere, as residents eat meals together and staff accommodate every resident's needs.



Haley House



PANEL DISCUSSION

QUESTIONS

