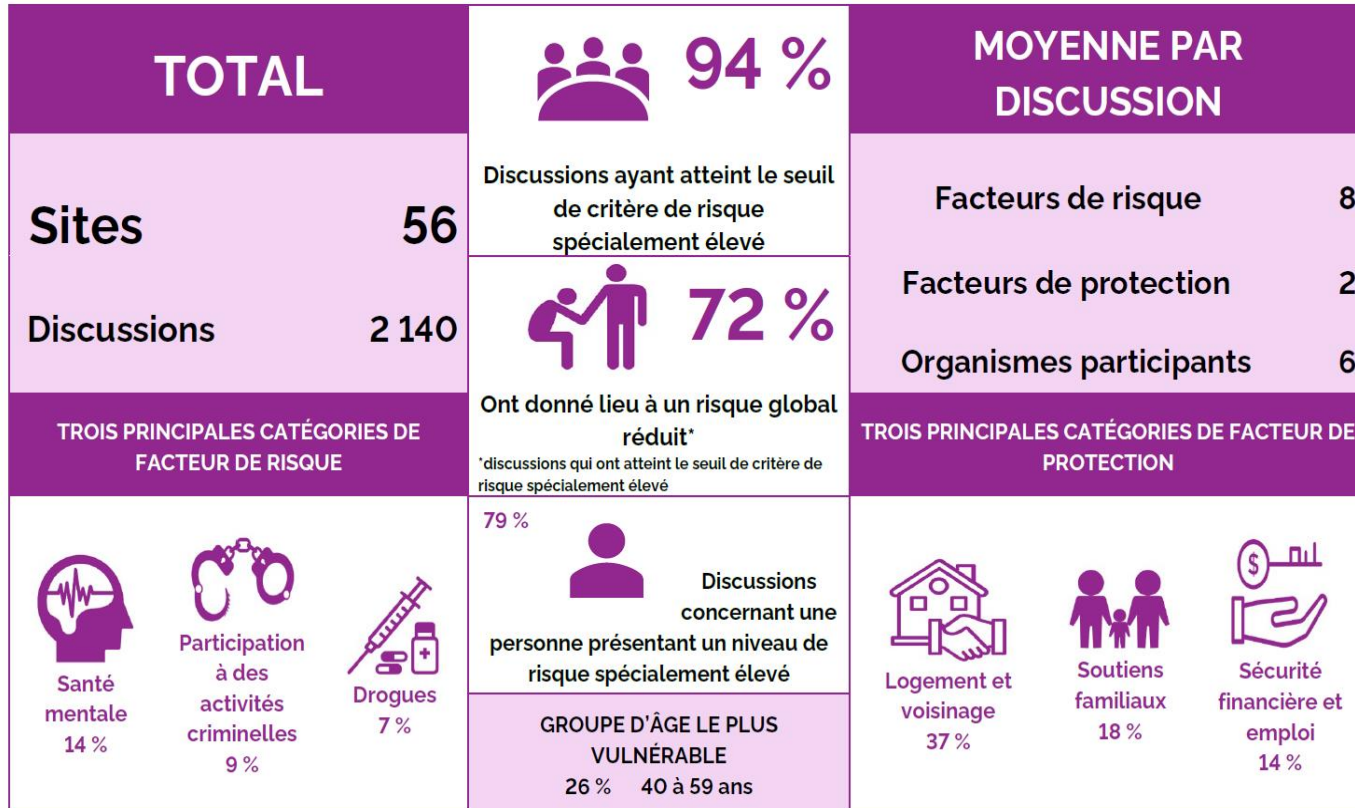


Rapport provincial vs Prescott Russell

# Provincial

vs

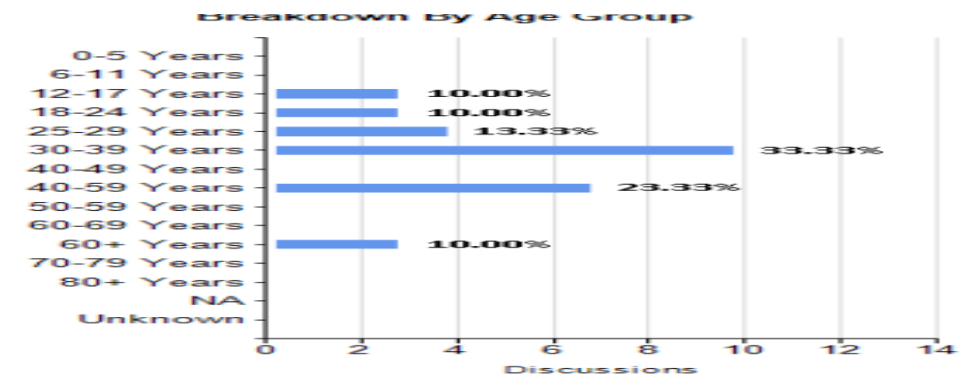
# P&R



Conclusion Grouping	# of Discussions	Percentage
Overall risk lowered	18	52.94%
Still AER	10	29.41%
Other	5	14.71%
Rejected	1	2.94%

Conclusion Reason - Still AER	# of Discussions	Percentage
Refused services/uncooperative	7	70.00%
Informed about services; not yet connected	2	20.00%
Systemic issue	1	10.00%

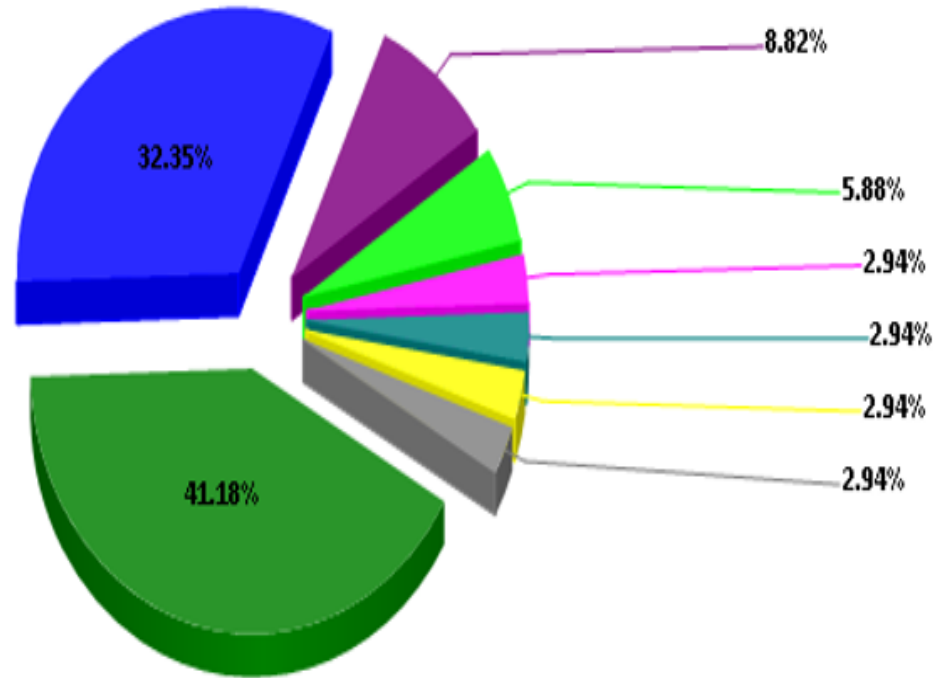
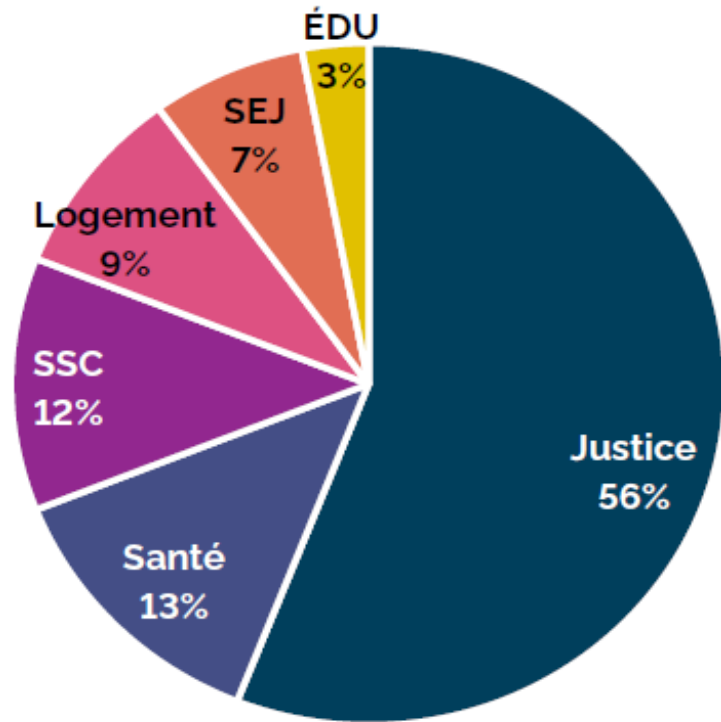
Conclusion Reason - Overall Risk Lowered	# of Discussions	Percentage
Connected to services	16	88.89%
Connected to personal supports	2	11.11%
<b>Total</b>	<b>18</b>	<b>100.00%</b>



# Provincial

# P&R

Secteur d'origine

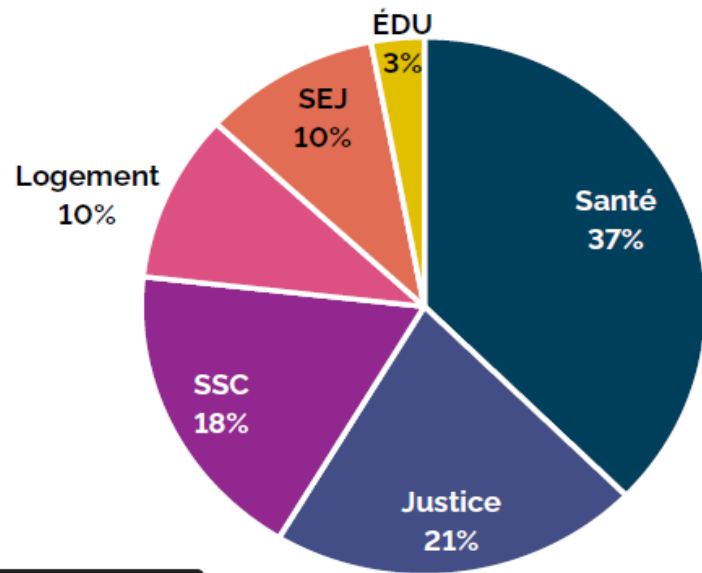


- Ontario Provincial Police - Hawkesbury
- Ontario Provincial Police - Russell County
- Ontario Works - United Counties of Prescott-Russell
- Youturn Youth Support Services
- Hawkesbury General Hospital - Adult Mental Health
- Hawkesbury General Hospital - Addiction Services
- Catholic District School Board of Eastern Ontario
- Canadian Mental Health Association - Champlain East - Hawkesbury Office

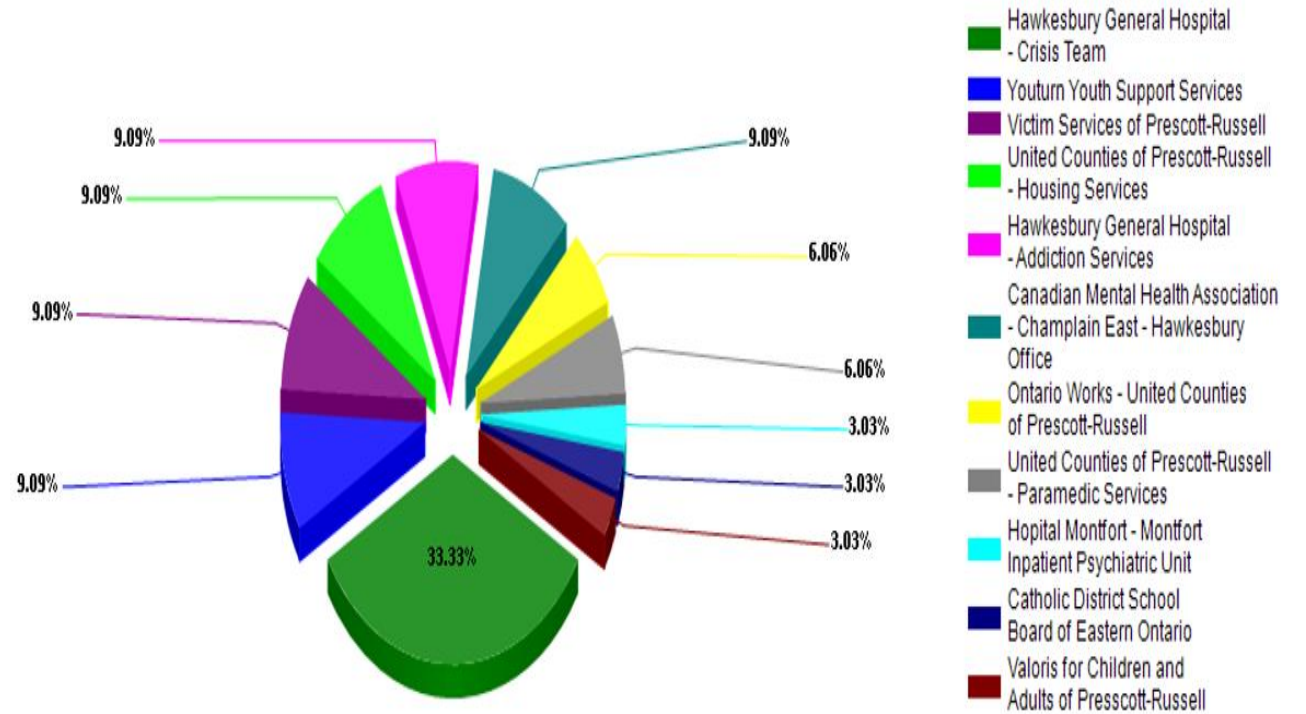
# Provincial

# vs P&R

Secteur responsable



Top Lead Agency



### RTD Highlights - Prescott-Russell

- 38 discussions in total
- 94.74% (36) of discussions have "Met the Threshold of Acutely Elevated Risk"
- 55.56% (20) of discussions that "Met the Threshold of Acutely Elevated Risk" resulted in "Overall Risk Lowered."

#### Top 3 Originating/Lead/Assisting Primary Sector:

##### Originating

1. Justice
2. Health\*
2. Community and Social Services\*

##### Lead

1. Health
2. Community and Social Services
3. Housing\*

##### Assisting

1. Justice
2. Health
3. Community and Social Services

#### Top 3 Originating/Lead/Assisting Agency:

##### Originating

1. Ontario Provincial Police - Hawkesbury
2. Ontario Provincial Police - Russell County
3. Ontario Works - United Counties of Prescott-Russell

##### Lead

1. Hawkesbury General Hospital - Crisis Team
2. United Counties of Prescott-Russell - Housing Services\*
2. Canadian Mental Health Association - Champlain East - Hawkesbury Office\*

##### Assisting

1. Ontario Provincial Police - Hawkesbury
2. Ontario Works - United Counties of Prescott-Russell
3. Ontario Provincial Police - Russell County

- On average, 5 agencies engaged per discussion that have "Met the Threshold of Acutely Elevated Risk"
- 33.33% of individuals at risk are ages 30-39 Years

**Top 3 CSWB High Level Risk Priority and Risk Category (By Occurrence):**

**CSWB High Level Risk Priority**

1. Mental Health and Cognitive Functioning
2. Antisocial/Problematic Behaviour (non-criminal)
3. Substance Abuse Issues

**Risk Category**

1. Mental Health
2. Criminal Involvement
3. Antisocial/Negative Behaviour

**Top 3 CSWB High Level Risk Priority/Risk Category (By Discussion):**

**CSWB High Level Risk Priority**

1. Mental Health and Cognitive Functioning
2. Antisocial/Problematic Behaviour (non-criminal)
3. Substance Abuse Issues

**Risk Category**

1. Mental Health
2. Antisocial/Negative Behaviour
3. Drugs

- On average, 10 risk factors per discussion that have "Met the Threshold of Acutely Elevated Risk", with 79 out of a possible 105 risk factors identified

**Top 3 Protective Factor Grouping:**

1. Mental Health
2. Physical Health\*
2. Family Supports\*

- Average number of days it took to close a discussion: 17 days

Risk Category	Number	Percentage
Mental Health	51	14.78%
Criminal Involvement	35	10.14%
Antisocial/Negative Behaviour	25	7.25%
Drugs	24	6.96%
Alcohol	17	4.93%
Crime Victimization	17	4.93%
Suicide	17	4.93%
Threat to Public Health and Safety	16	4.64%
Negative Peers	15	4.35%
Emotional Violence	14	4.06%
Housing	14	4.06%
Physical Health	12	3.48%
Physical Violence	12	3.48%
Poverty	11	3.19%
Basic Needs	11	3.19%
Unemployment	11	3.19%
Parenting	9	2.61%
Supervision	7	2.03%
Social Environment	6	1.74%
Missing/Runaway	5	1.45%
Self Harm	5	1.45%
Sexual Violence	5	1.45%
Cognitive Functioning	5	1.45%
Missing School	1	0.29%
<b>Total</b>	<b>345</b>	<b>100.00%</b>

**Total Discussions: 38**  
**Discussions (with Risk Factor records): 36**  
**Total Risk Factors Reported: 345**  
**Sites with Data: 1**  
**Total Number of Sites: 1**